

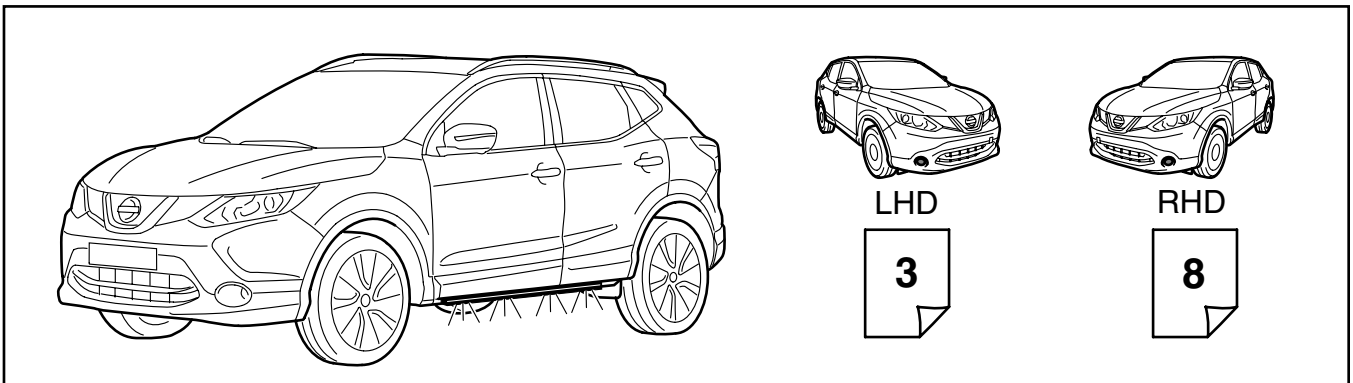
# NISSAN

## Part Number

KE295-4E001

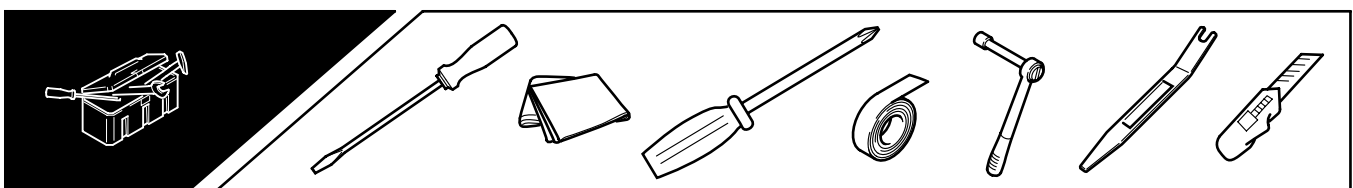
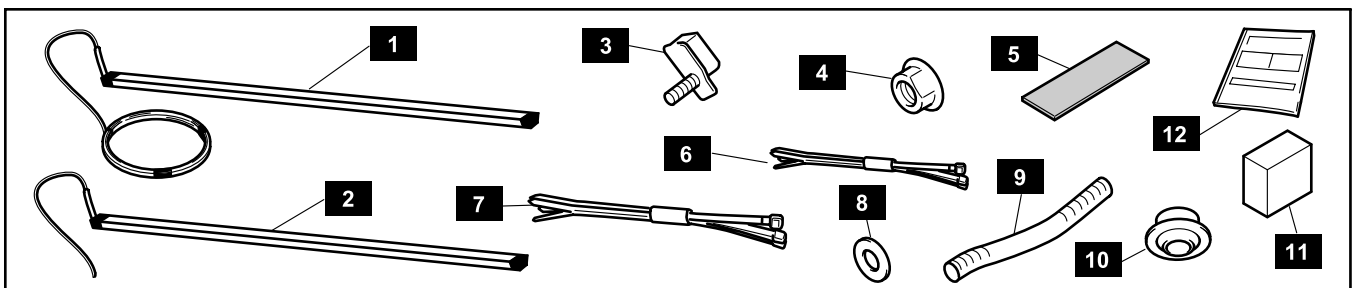
Qashqai J11 (12-2013 ->)  
Nissan International SA

- |  |                                    |                                     |
|--|------------------------------------|-------------------------------------|
| <b>GB</b> Welcome Lighting   | <b>RU</b> Приветственное освещение | <b>IT</b> Luci di benvenuto         |
| <b>AR</b> أضواء الترحيب  | <b>SK</b> Uvítacie osvetlenie      | <b>NL</b> Welkomstverlichting       |
| <b>IL</b> תאורת 'בחכים הבאים'  | <b>SI</b> Svetilke za dobrodošlico | <b>DK</b> Indstigningslys           |
| <b>BG</b> Светлини "Добре дошли"   | <b>CZ</b> Uvítací osvětlení        | <b>FI</b> Tervetulovalaistus        |
| <b>HR</b> Welcome opcija<br>(paljenje oborenih svjetala prilikom otključavanja vozila) | <b>UA</b> Вітальне підсвічування   | <b>IS</b> Inngöngulyós              |
| <b>GR</b> Φωτισμός καλωσορίσματος  | <b>TR</b> Karşılama aydınlatması   | <b>NO</b> Innstigningslys           |
| <b>HU</b> Üdvözlőfény  | <b>FR</b> Eclairage de bienvenue   | <b>PT</b> Iluminação de boas-vindas |
| <b>PL</b> Oświetlenie powitalne  | <b>DE</b> Begrüßungslicht          | <b>SE</b> Välkomstbelysning         |
| <b>RO</b> Lumini de întâmpinare  | <b>ES</b> Luz de bienvenida        |                                     |



No.	PART NAME	QTY.
1	Welcome Lighting LH	1
2	Welcome Lighting RH	1
3	Bolt	8
4	Nut	8
5	Urethane cushion tape	12
6	Tie-Wrap (small)	4
7	Tie-Wrap (large)	4

8	Washer	8
9	Convolut Tube	2
10	Gromment	2
11	Connectors	9
12	Installation Manual	1





- GB** We recommend the assembly be carried out in a Nissan workshop. No guarantee in case of improper assembly
- AR** نوصي بتنفيذ عملية التجميع في ورشة نيسان. لأن الضمان لا يسري في حالة التجميع الخاطئ
- IL** אנחנו ממליצים לבצע את ההרכבה במוסך ניסאן. לא יהיה כיסוי באחריות במקרה של הרכבה לא תקינה
- BG** Препоръчваме монтажа да се извърши в сервиз на NISSAN. Не поемаме гаранции в случай на неправилен монтаж.
- HR** Preporučujemo da se izvrši sklapanje u Nissan-ovoj radionici. Nema jamstva u slučaju neprikladnog sklapanja
- GR** Συνιστάται η συναρμολόγηση να πραγματοποιηθεί σε συνεργείο της Nissan. Η εγγύηση δεν ισχύει σε περίπτωση λαθασμένης συναρμολόγησης.
- HU** Azt javasoljuk, hogy a szerelést egy Nissan szervizben végeztesse el. Helytelen felszerelés esetén nem biztosítunk garanciát
- PL** Zalecamy przeprowadzenie montażu w warsztacie Nissan. Brak gwarancji w przypadku niewłaściwego montażu.
- RO** Recomandăm ca montarea să fie efectuată într-un atelier Nissan. Nu se acordă garanție în cazul unei montări incorecte.
- RU** Рекомендуем проводить сборку в мастерской Nissan. Неправильная сборка аннулирует гарантию
- SK** Odporúčame, aby sa montáž vykonala v opravárenskej dielni spoločnosti Nissan. V prípade nesprávnej montáže stratíte nárok na záruku.
- SI** Priporočamo, da montažo opravijo delavci v servisu Nissan. Nepravilna montaža pomeni razveljavitev garancije.
- CZ** Doporučujeme provádět montáž v servisu Nissan. Na nesprávnou montáž se nevztahuje záruka
- UA** Ми рекомендуємо проводити установку в майстерні Nissan. У разі невірної установки гарантійні умови не виконуються
- TR** Montaj'ın Nissan atölyesinde gerçekleştirilmesini tavsiye ederiz. Yanlış kurulum yapılması halinde garanti geçersiz kalacaktır.
- FR** Il est recommandé d'effectuer l'opération de montage dans un atelier Nissan. En cas de montage non conforme, la garantie ne sera pas valable.
- DE** Wir empfehlen, die Montage von einer NISSAN-Werkstatt durchführen zu lassen. Schäden, die durch eine fehlerhafte Montage entstehen, sind nicht durch die Garantie gedeckt.
- ES** Recomendamos que la operación de montaje sea llevada a cabo en un taller NISSAN. La garantía no resultará válida en caso de montaje inadecuado.
- IT** Raccogliamo che l'assemblaggio venga effettuato presso un'officina Nissan. Nessuna garanzia in caso di assemblaggio improprio.
- NL** Wij raden aan dat de montage door een NISSAN-garagebedrijf wordt gedaan. In geval van onjuiste montage vervalt de garantie.
- DK** Vi anbefaler, at monteringen udføres af et Nissan-værsted. Ingen garanti i tilfælde af ukorrekt montering.
- FI** Suosittelemme, että asennus suoritetaan Nissan-huoltoliikkeessä. Takuu ei ole voimassa, mikäli asennus on tehty väärin.
- IS** Mælt er með því að uppsetningin fari fram á Nissan-verkstæði. Ef uppsetningin er ekki framkvæmd með réttum hætti fellur ábyrgðin úr gildi.
- NO** Vi anbefaler at monteringen utføres på et Nissan-verksted. Garantien blir ugyldig ved feil montering.
- PT** Recomendamos que a montagem seja efectuada numa oficina Nissan. No caso de montagem incorrecta, não será válida qualquer garantia.
- SE** Vi rekommenderar att monteringen utförs av en Nissan-verkstad. Garantien gäller ej om monteringen är felaktigt utförd.

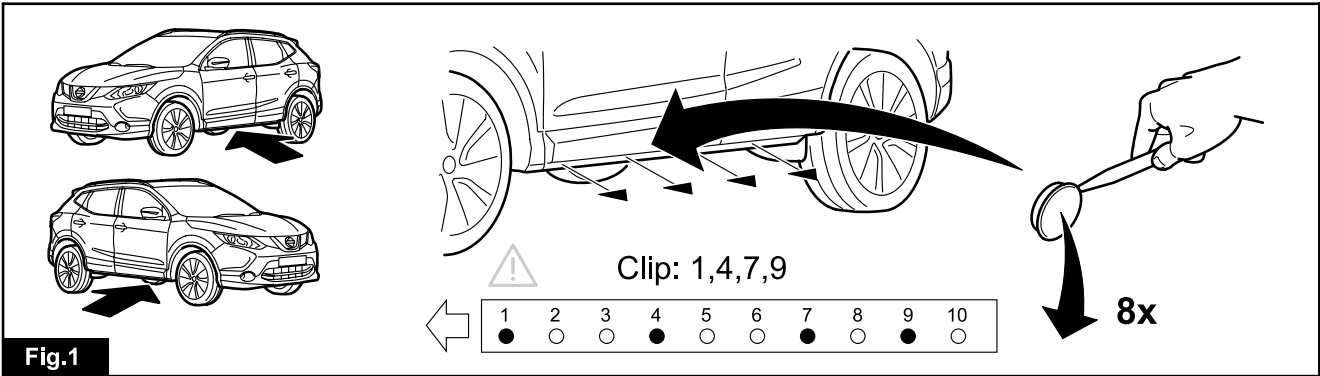
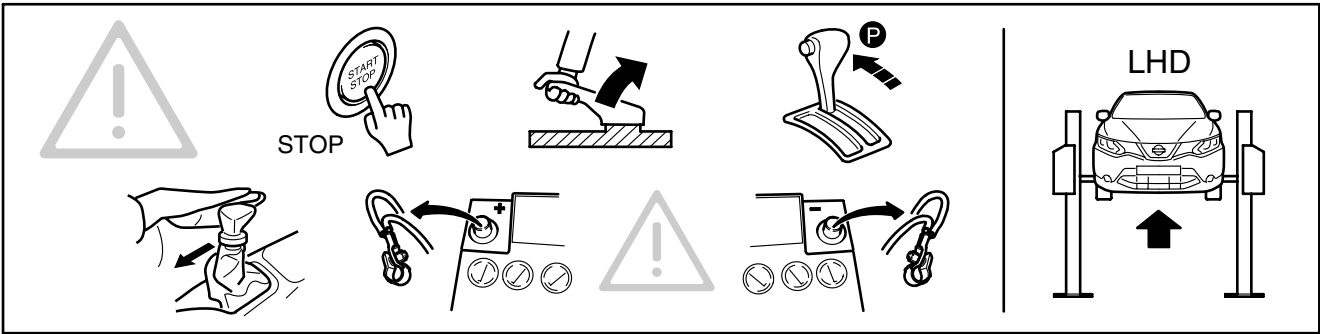


Fig.1

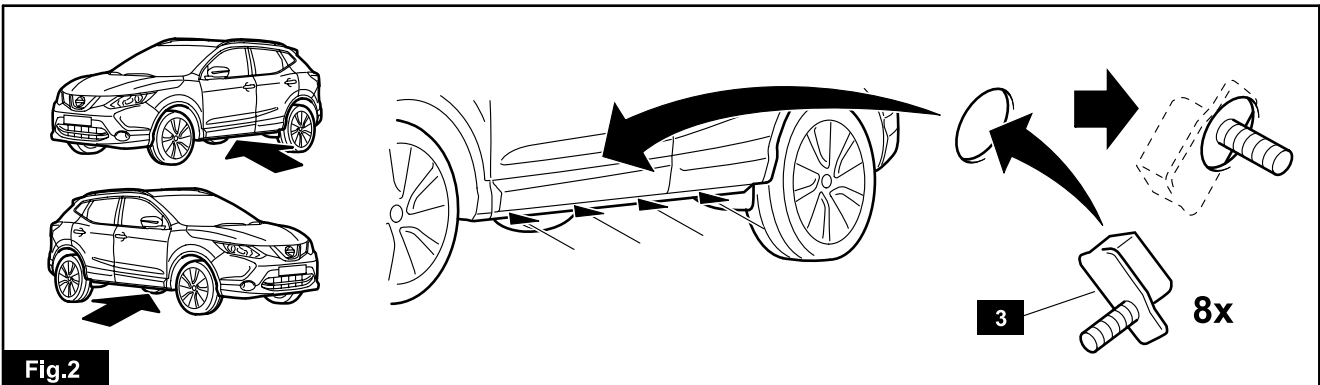


Fig.2

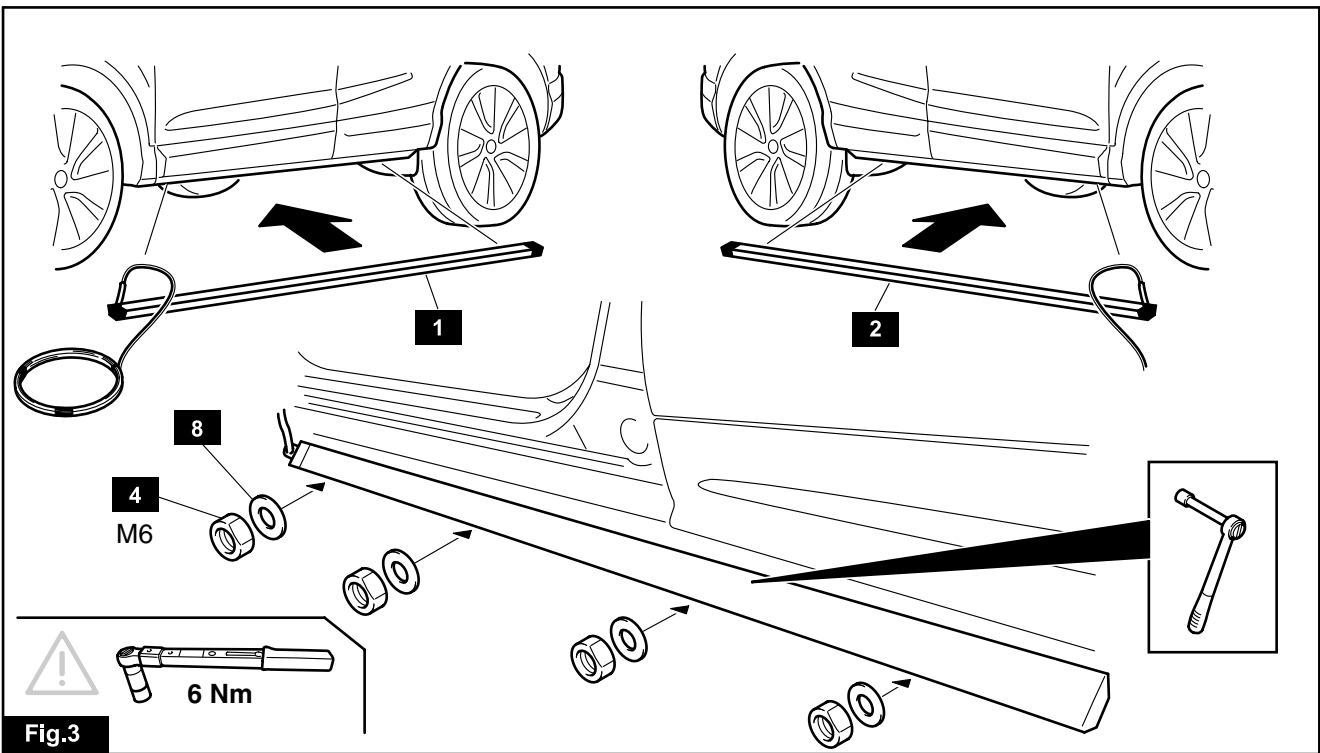
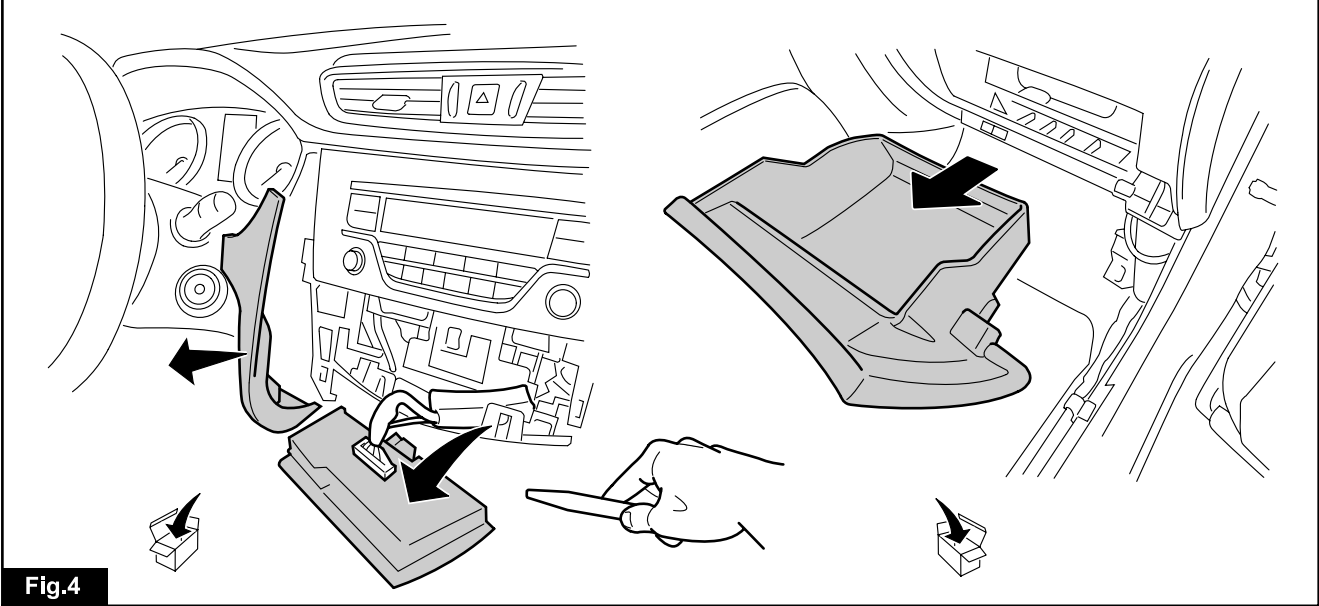
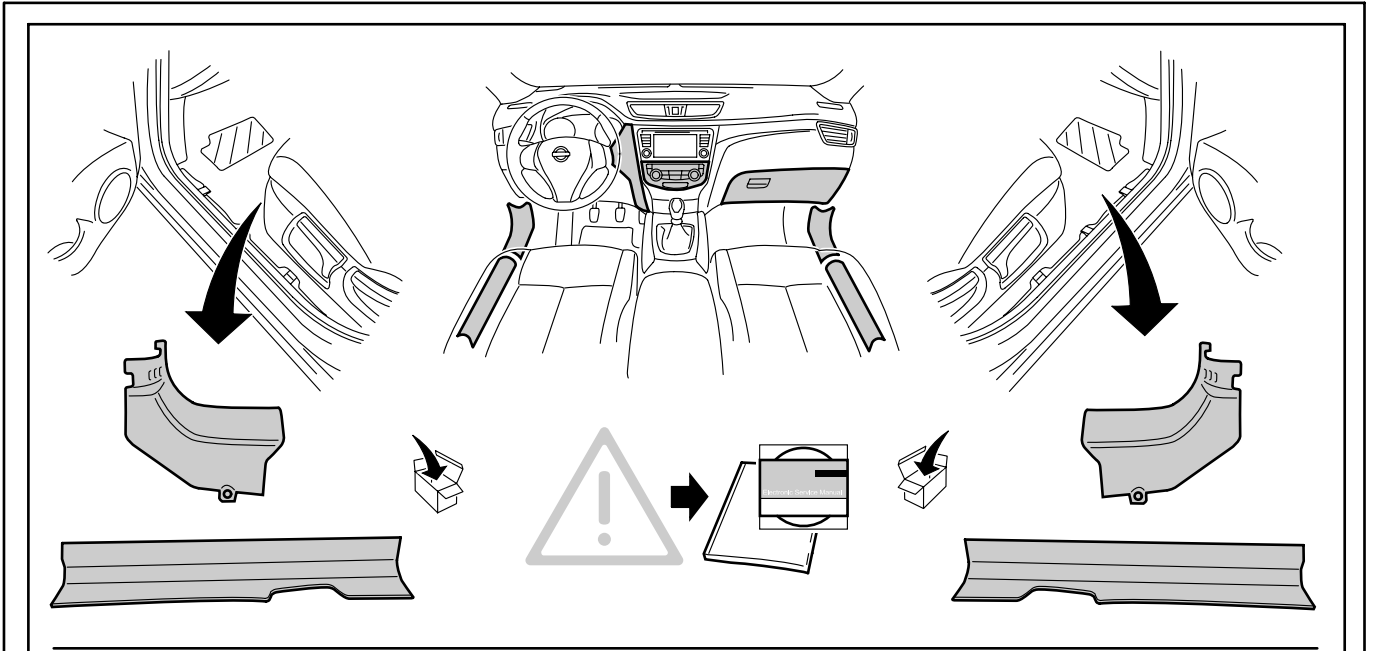
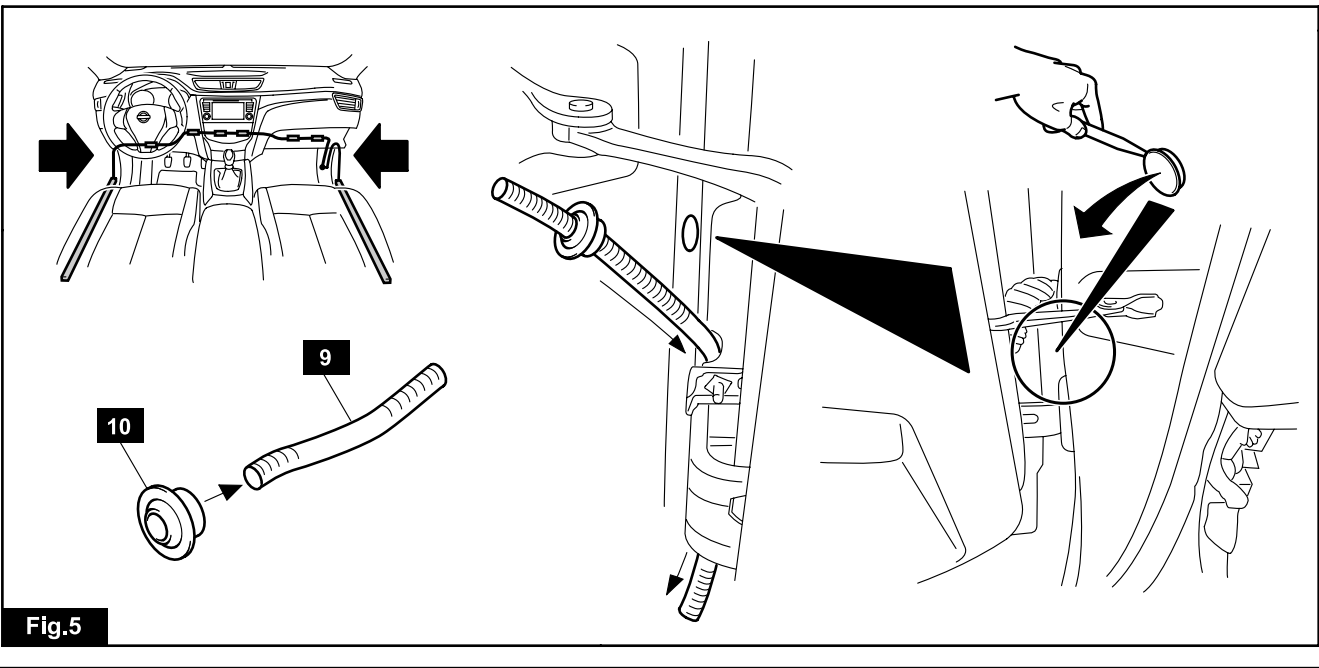


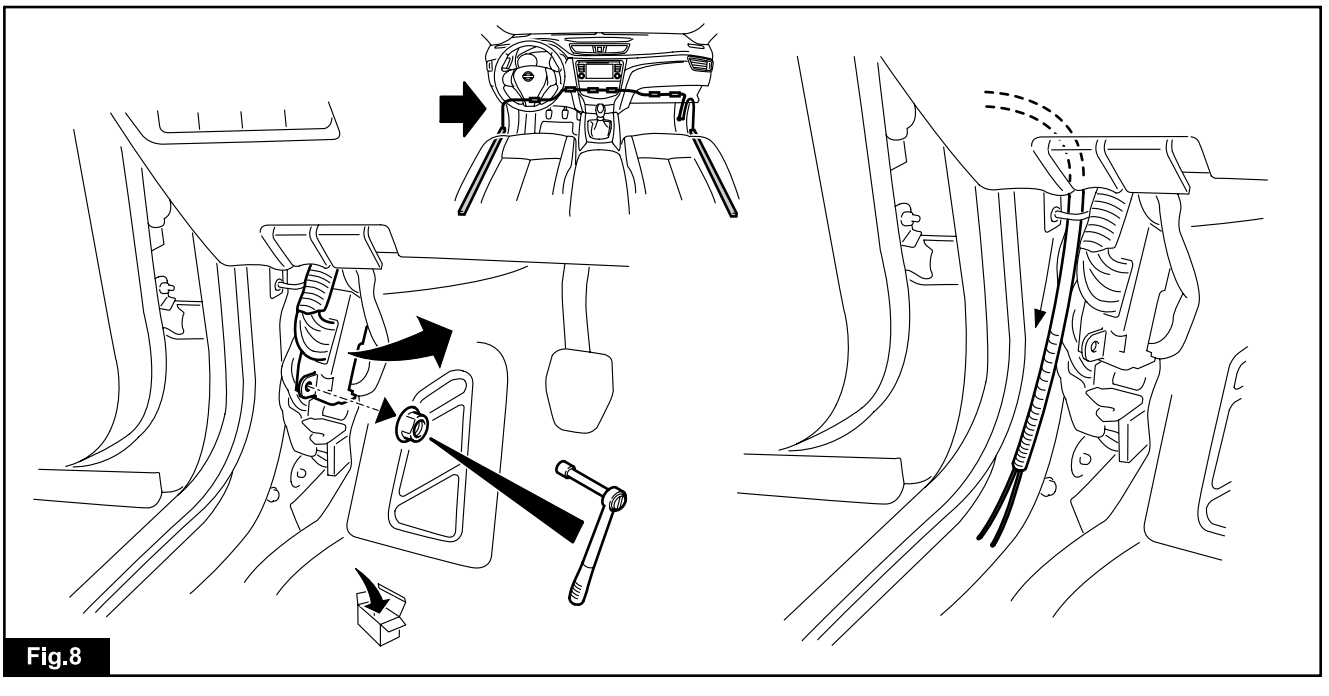
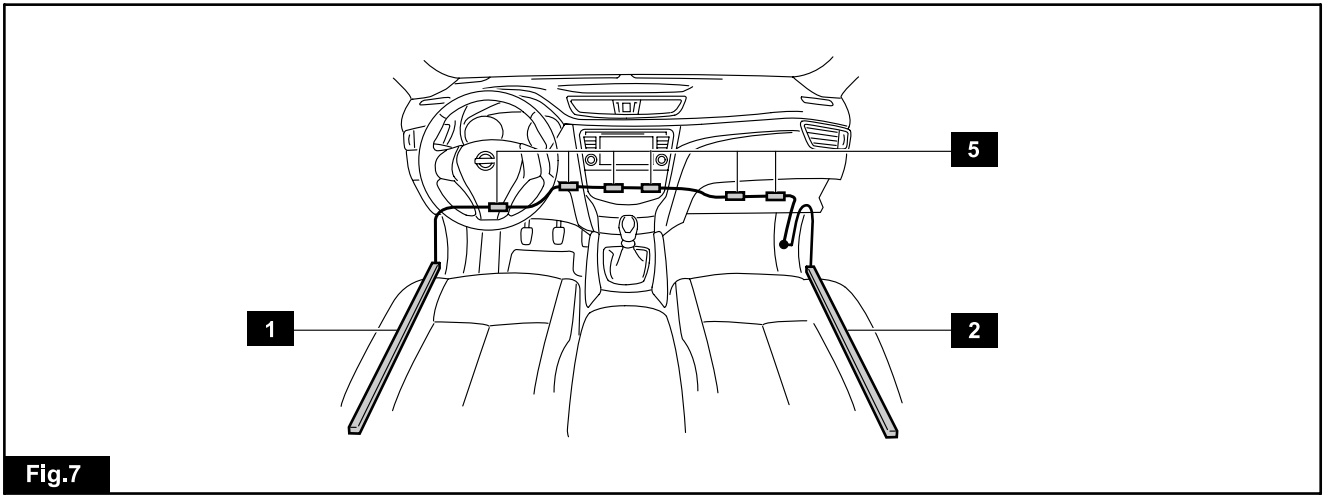
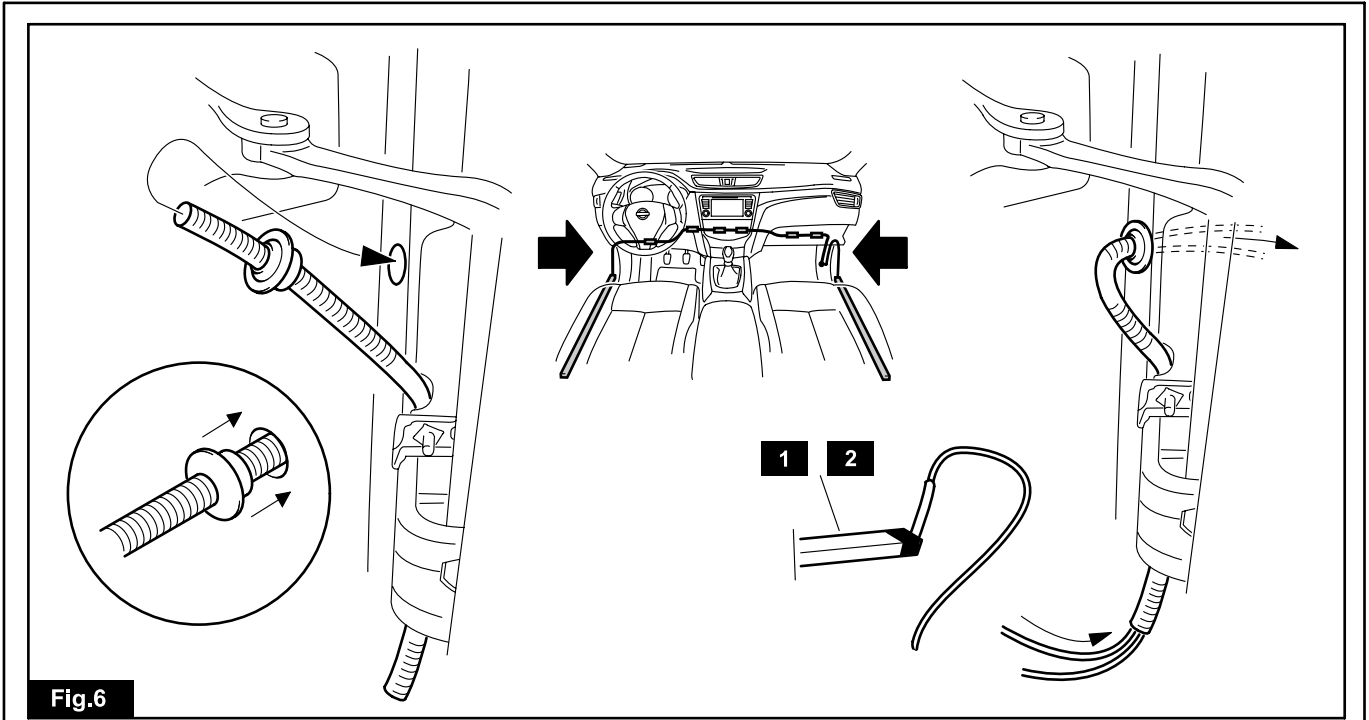
Fig.3

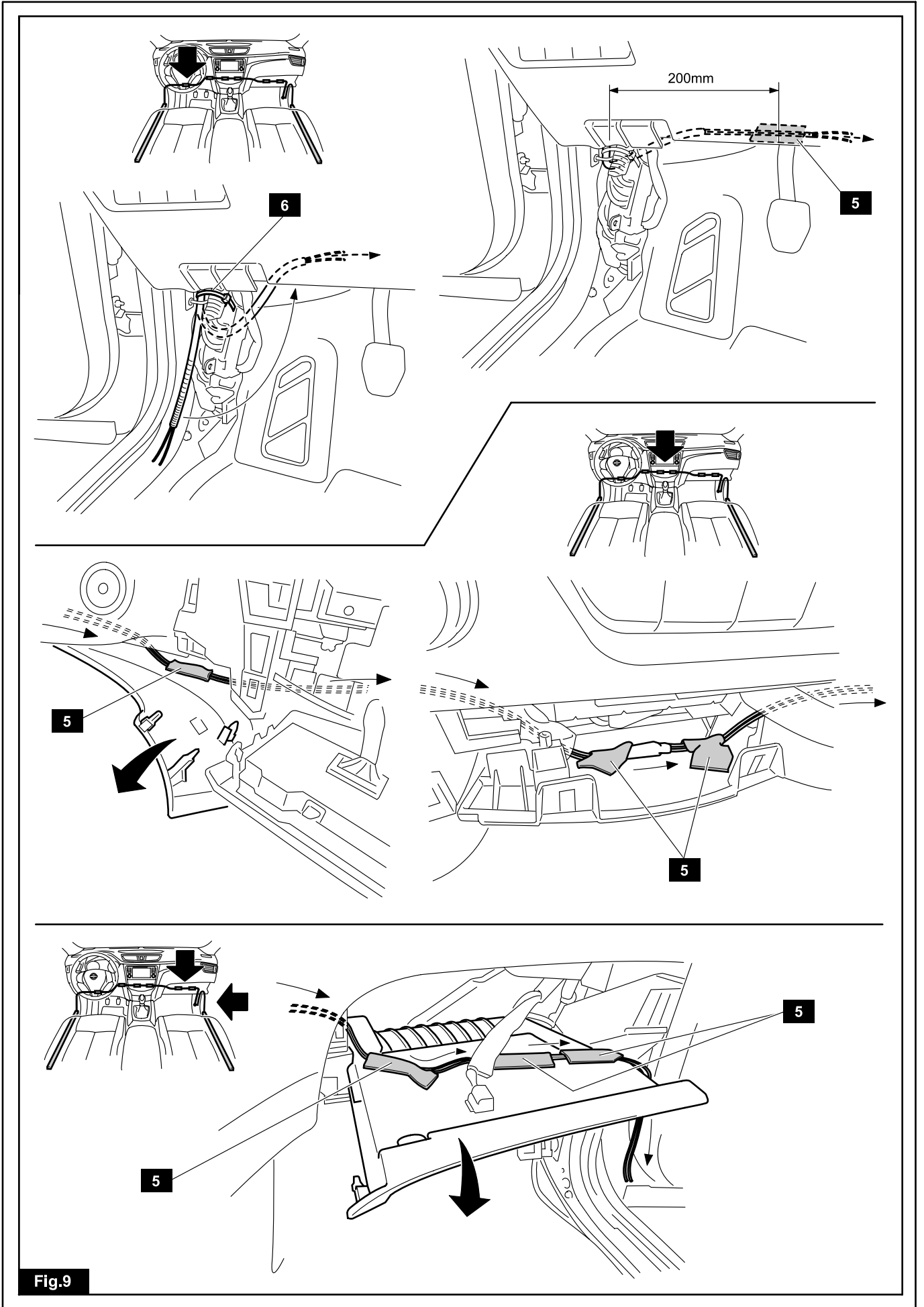


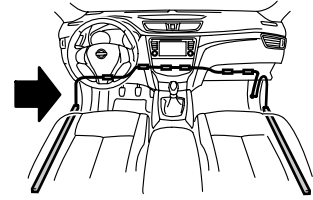
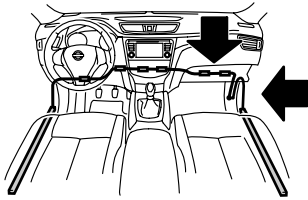
**Fig.4**



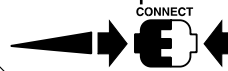
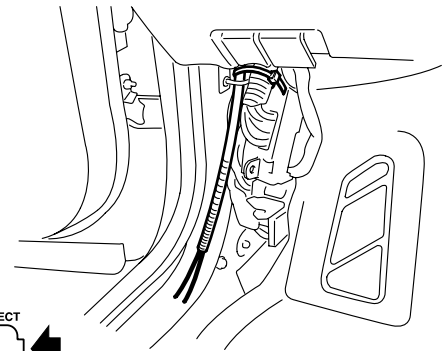
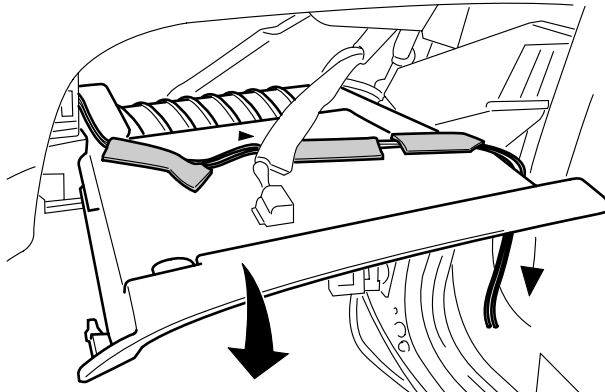
**Fig.5**





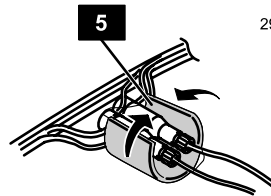
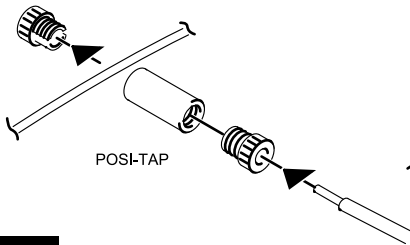
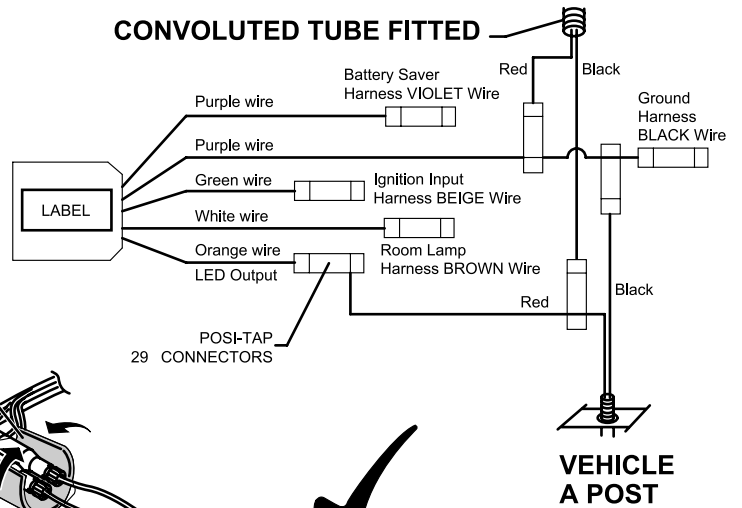


**J11 RUSSIAN BUILD**

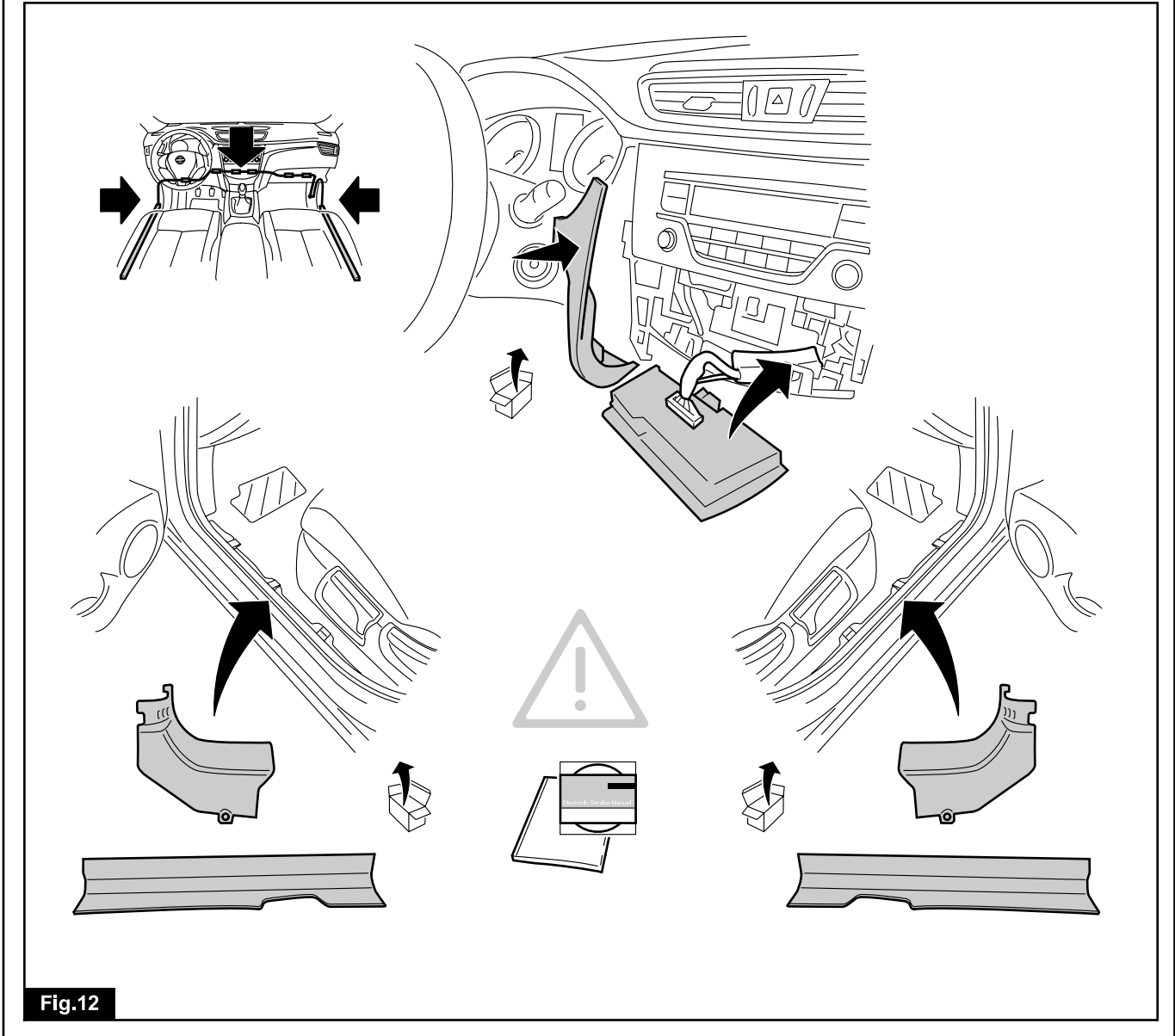
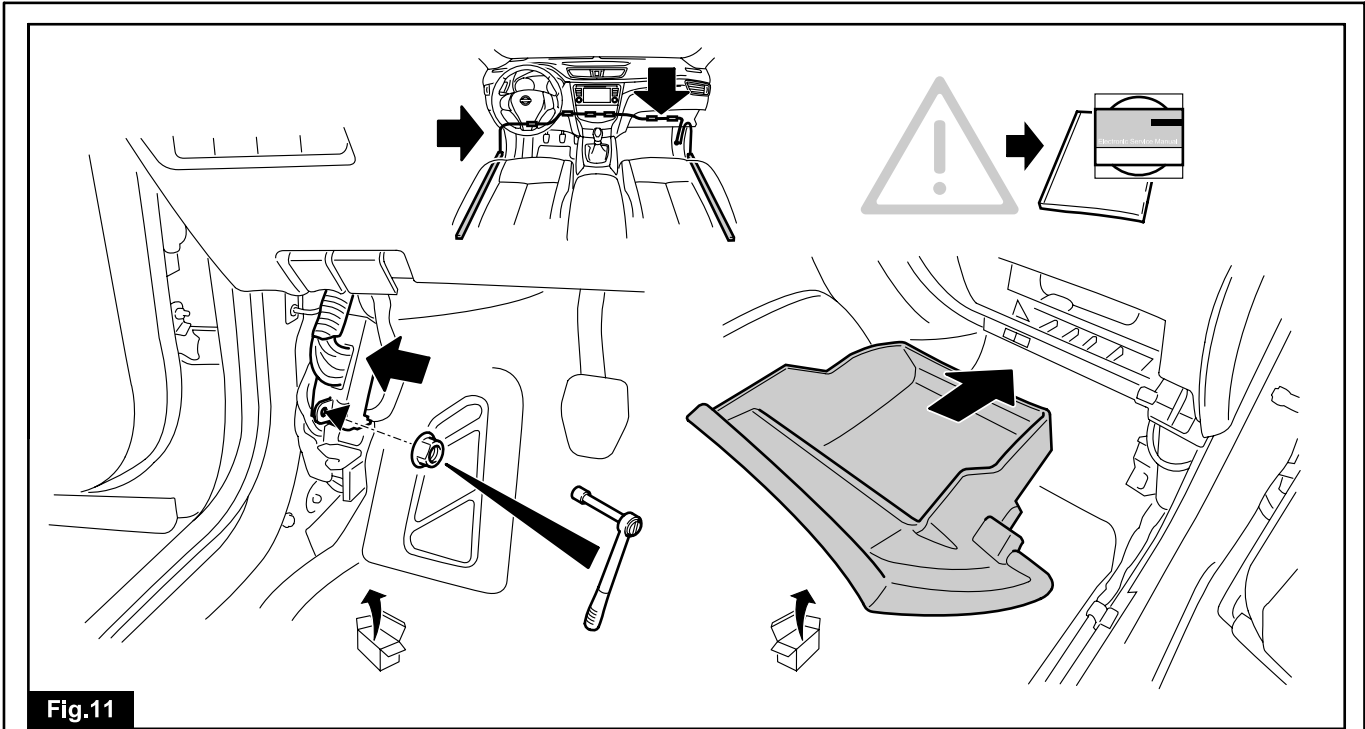


		OPTION CONN EUR ILL	
CIVUS	OPO1 0,35 Y D-Op	1	+B
CIVUS	OPO2 0,35 Bg D-Op	2	+IGN
	OPO3 0,35 v D-Op	3	ROOM LAMP (POWER)
	OPO4 0,35 Br D-Op	6	ROOM LAMP
BDY-LH,H MAIN-H			
OPE5 0,5 G D-Op	CIVUS OPO5 0,5 W	4	REV LAMP
(Info from NESAS Michel-son)			
CIVUS	OPE3 0,35 B D-Op	8	GND

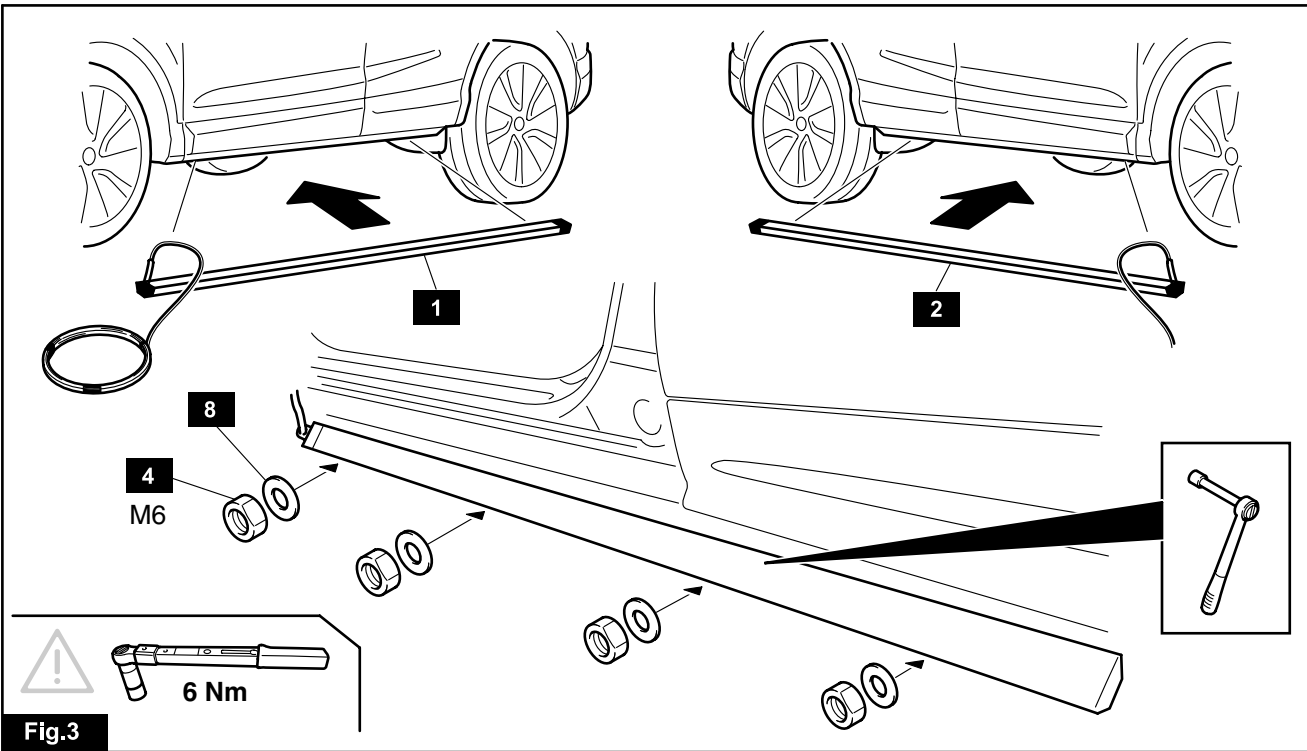
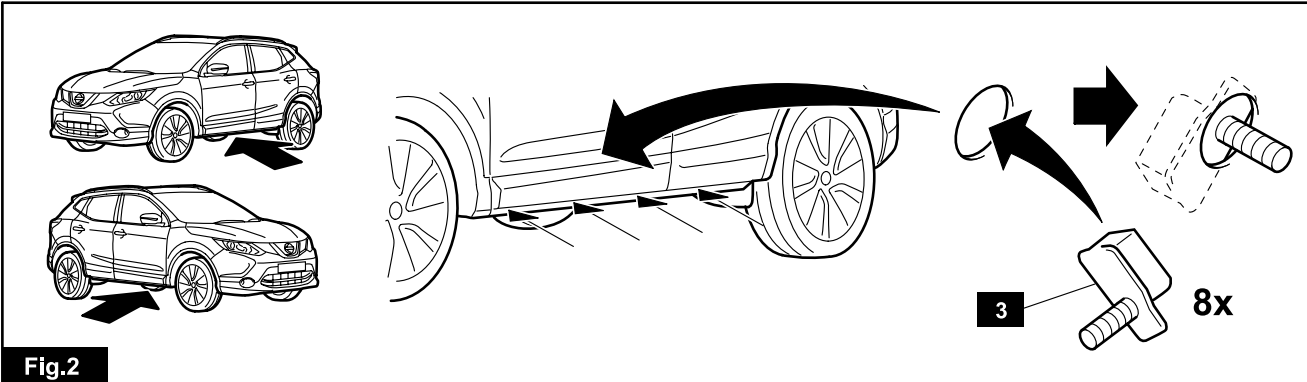
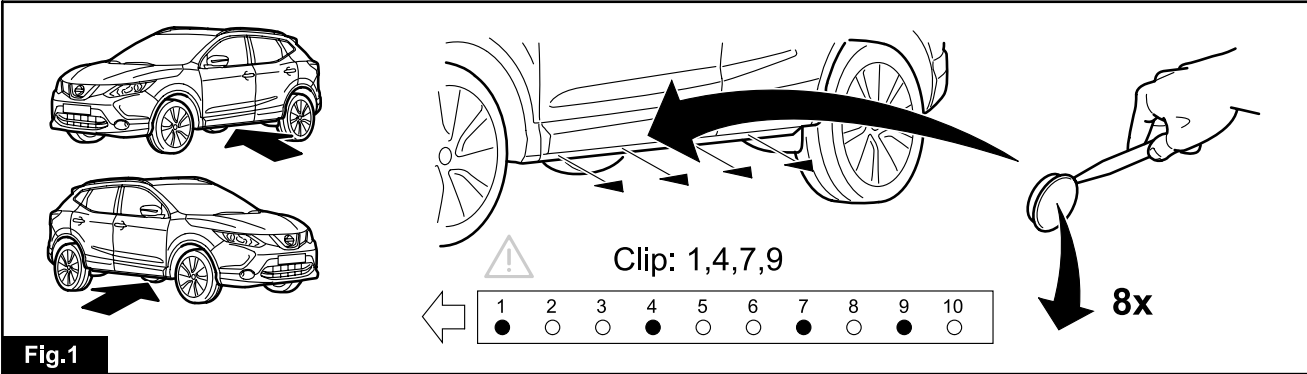
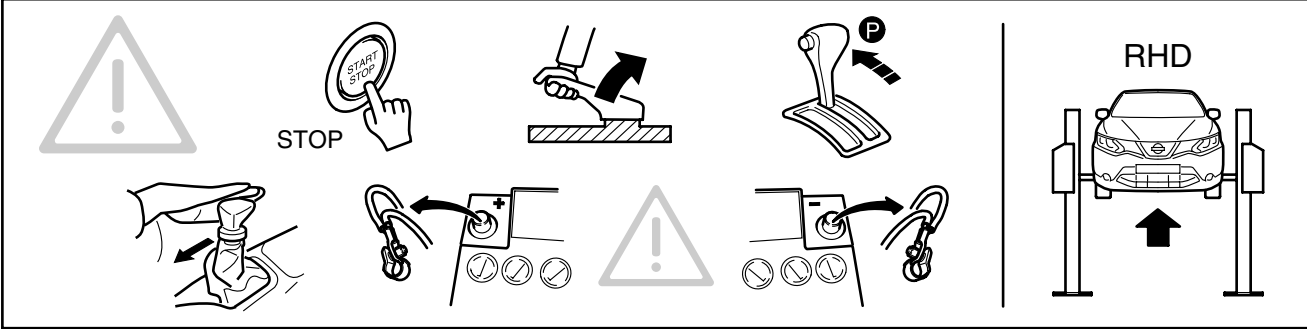
**CONVOLUTED TUBE FITTED**



**Fig.10**







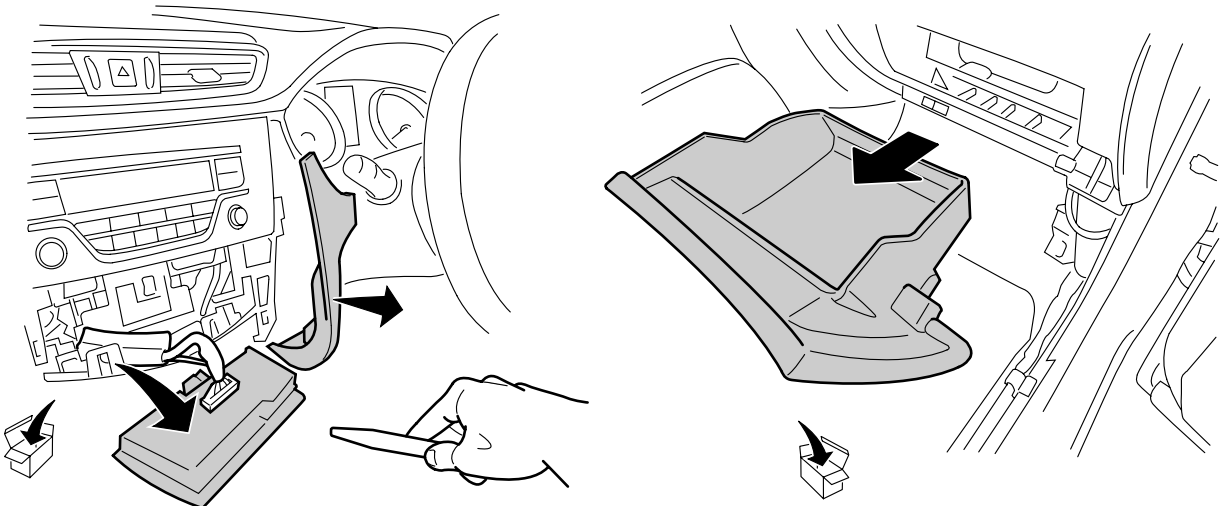
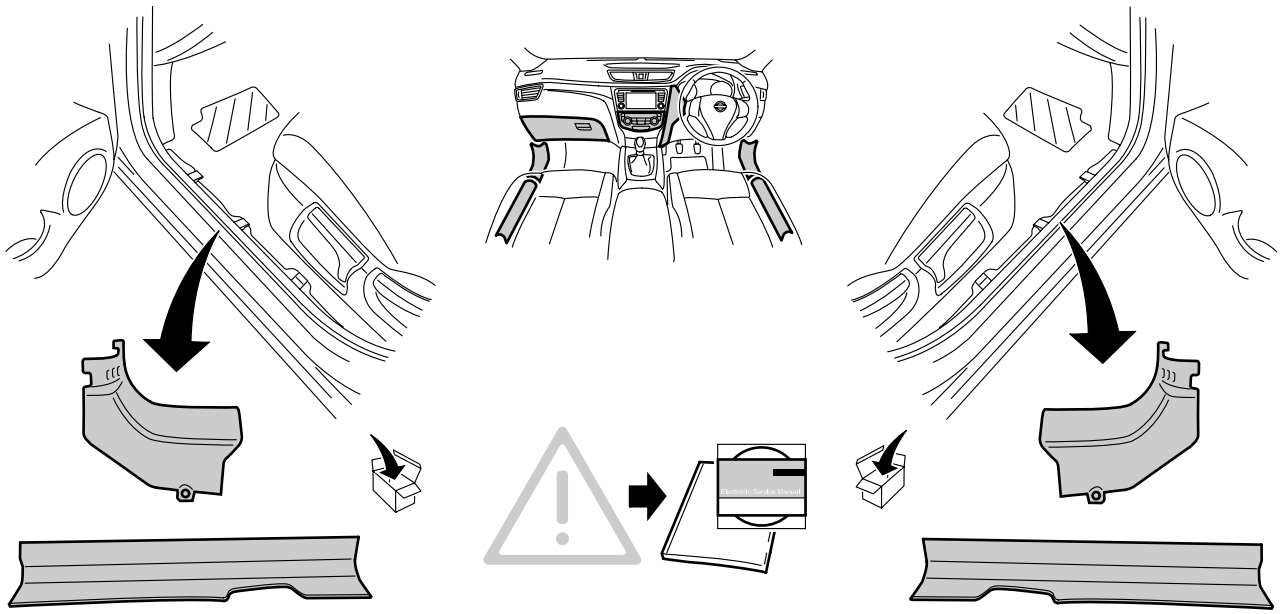


Fig.4

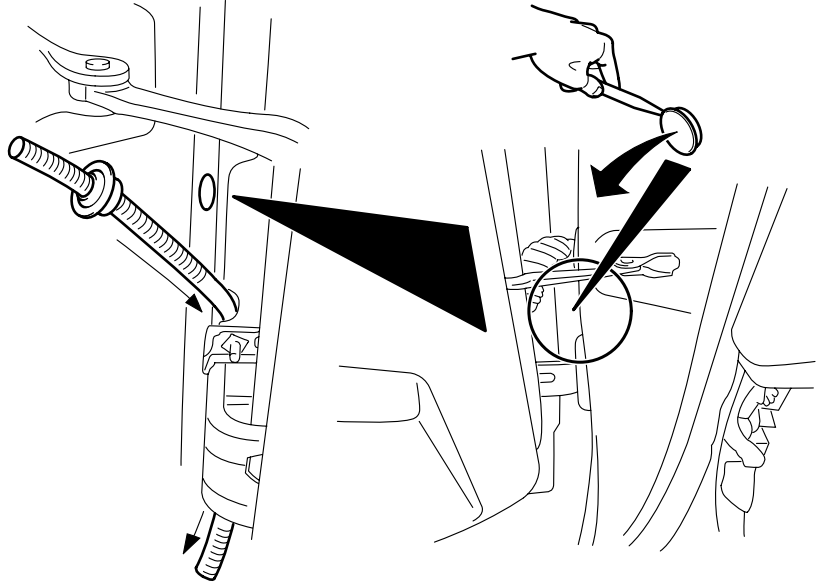
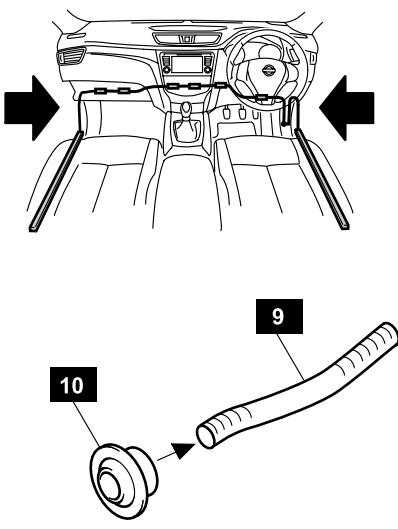
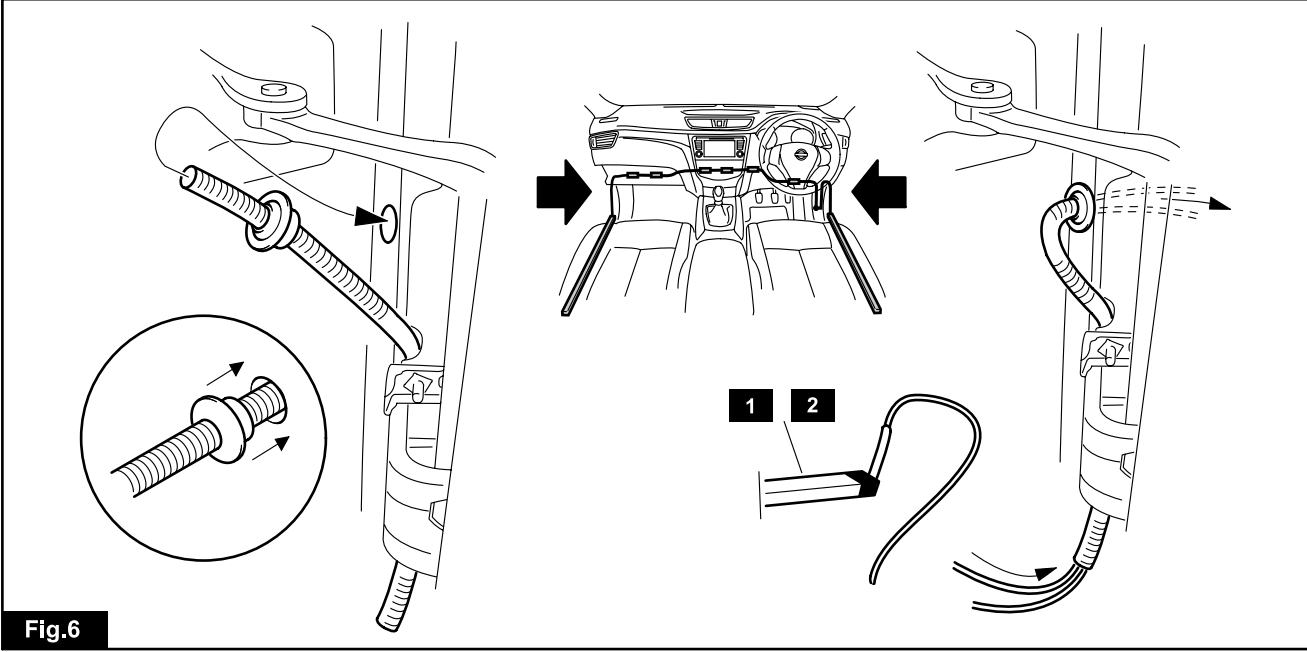
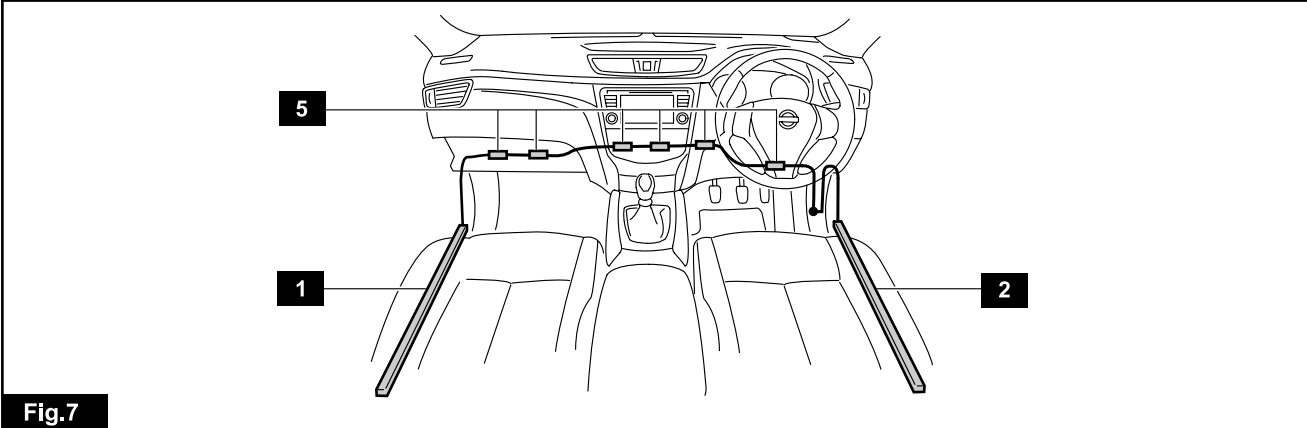


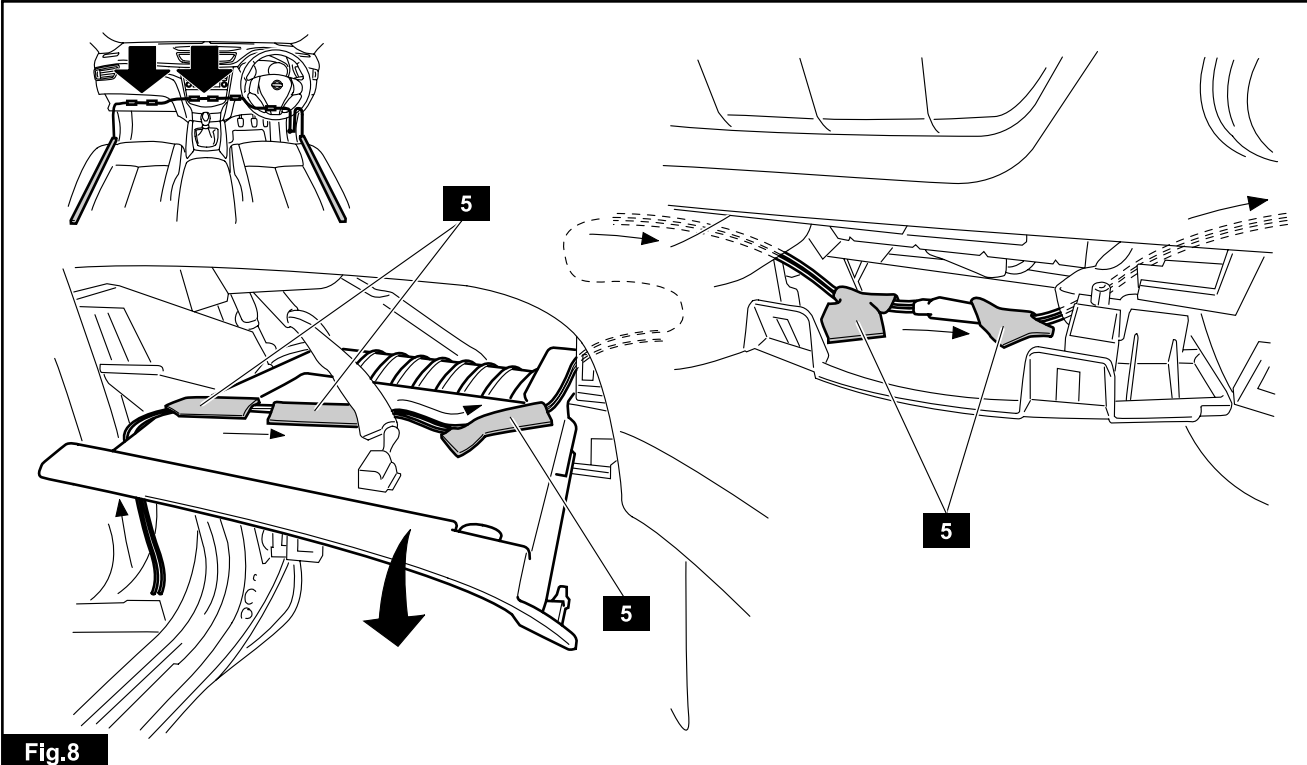
Fig.5



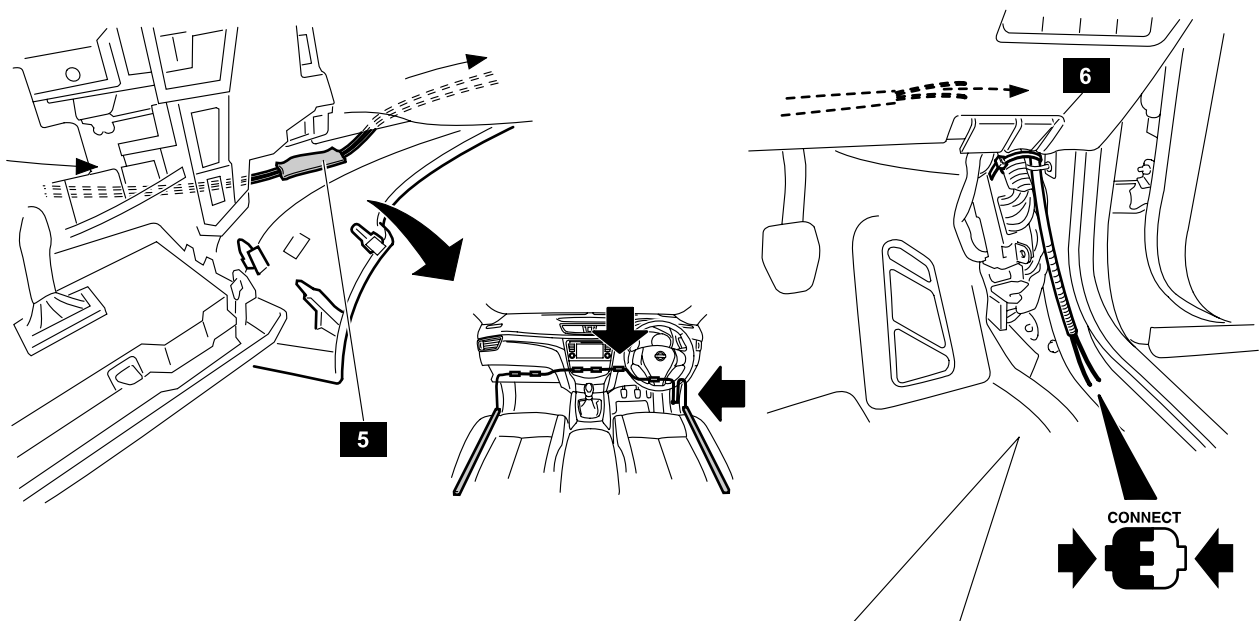
**Fig.6**



**Fig.7**

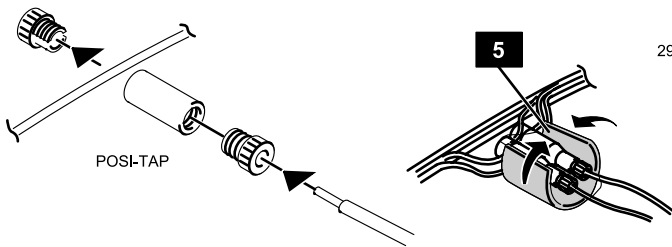
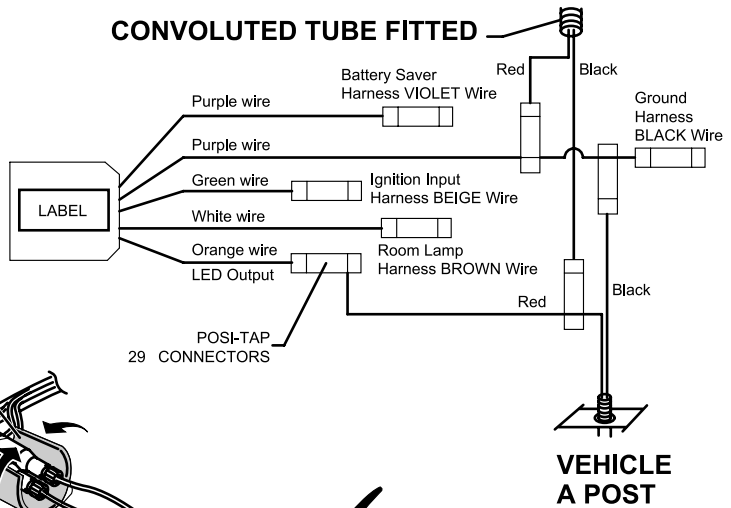


**Fig.8**



		OPTION CONN EUR ILL	
CIVUS	OPO1 0.35 Y D-Op	1	+B
CIVUS	OPO2 0.35 Bg D-Op	2	+IGN
	OPO3 0.35 v D-Op	3	ROOM LAMP (POWER)
	OPO4 0.35 Br D-Op	6	ROOM LAMP
BDY-LH.H MAIN-H			
OPE5 0.5 G D-Op	CIVUS OPO5 0.5 W	4	REV LAMP
<small>(info from NESAS Michel-son)</small>			
CIVUS	OPE3 0.35 B D-Op	8	GND

**CONVOLUTED TUBE FITTED**



**Fig.9**

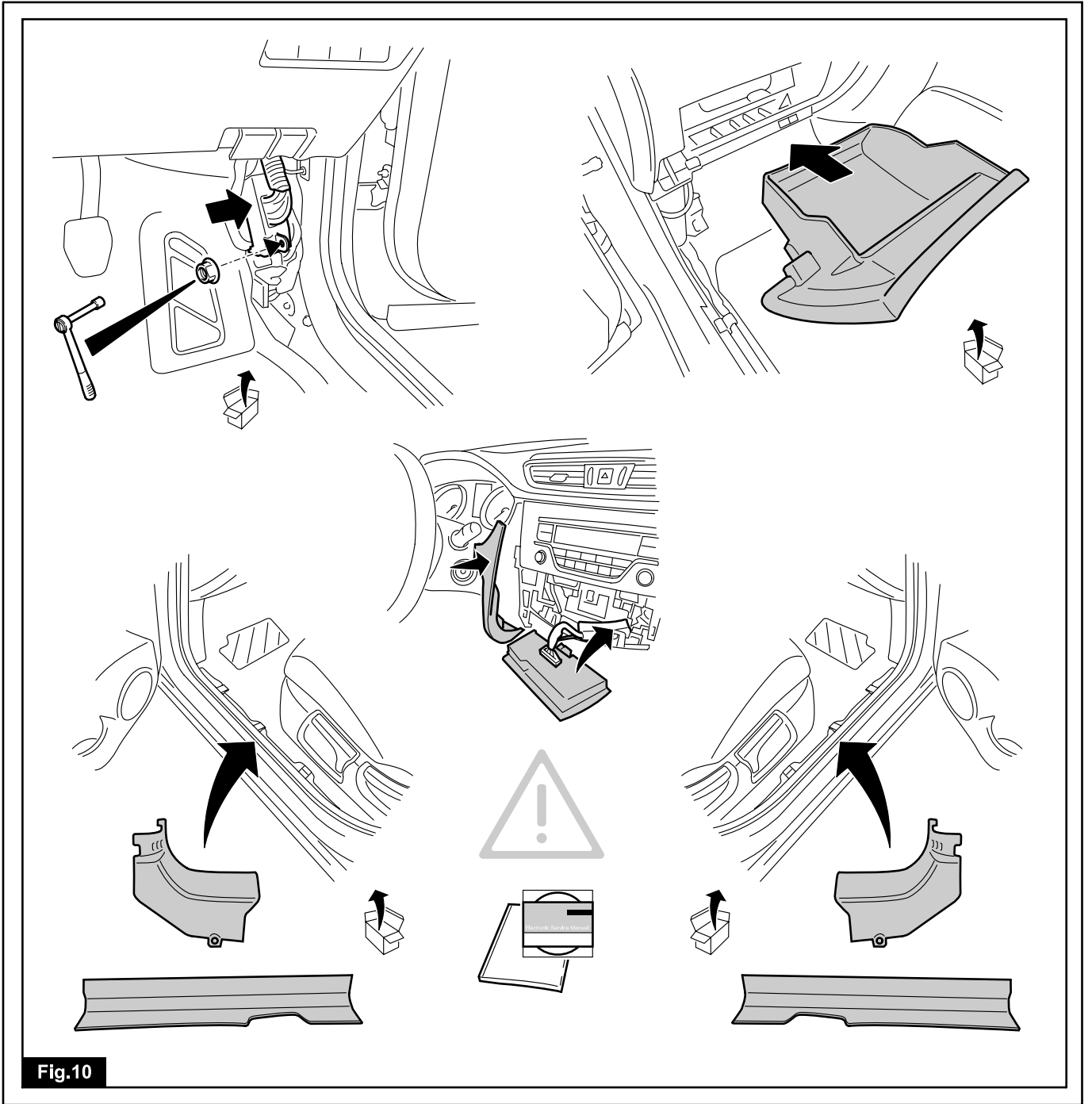


Fig.10