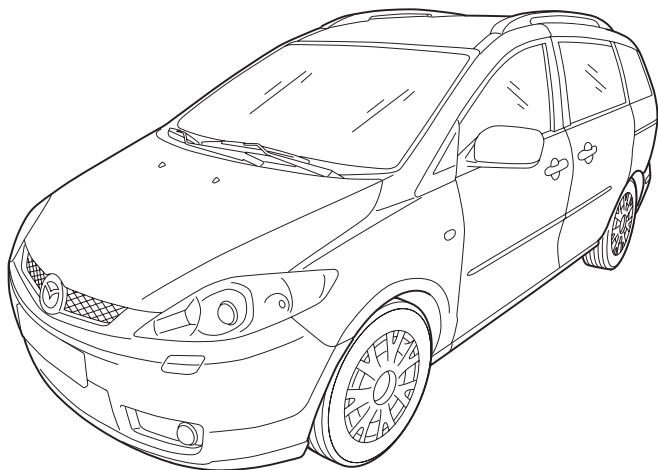


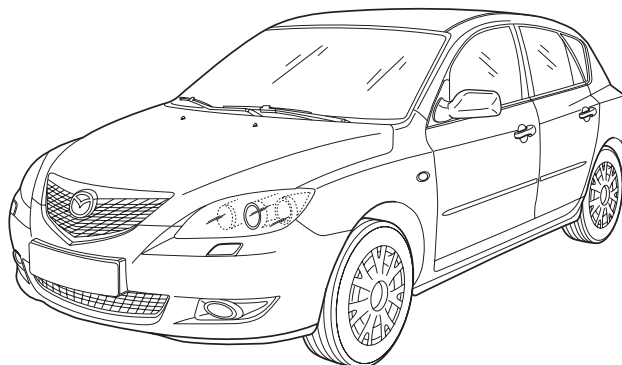
MAZDA

GB	TRUNK NET Installation instruction
D	ABLAGENETZ Einbauanleitung
E	RED PARA LA BANDEJA Instrucciones de montaje
F	FILET A BAGAGES Notice de montage
I	RETE PORTAOGGETTI Istruzioni di montaggio
P	REDE PORTA-OBJECTOS Instruções de montagem
NL	OPBERGNET Inbouw-instructie
DK	BAGAGENET Monteringsvejledning

N	OPPBEVARINGSGARN Monteringsveiledning
S	NÄTKASSE Monteringsanvisning
SF	TAVARAVERKKO Asennusohje
CZ	ODKLÁDACÍ SÍTKA Návod k montáži
H	LERAKÓHÁLÓ Beszerelési utasítás
PL	SIATKA NA PRZEDMIOTY Instrukcja zabudowy
GR	ΔΙΣΤΥ ΜΙΚΡΟΑΝΤΙΚΕΙΜΕΝΩΝ Οδηγίες τοποθέτησης



MAZDA 5 CR1



MAZDA 3 BK

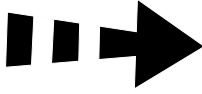
Part Number: **C830-V0-531**
LD47-69-56X 02

Date: 10-05-2006

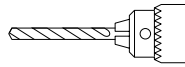
© Copyrights MAZDA

Sheet 1 of 11

Expert Fitment Required
Montage durch Fachwerkstatt erforderlich
Montaje sólo por el concesionario
Montage par spécialiste nécessaire
E' necessario in officina specializzata
Especialista em montagem requerido
Montage door vakman nodig
Montage ved professionelt værksted påkrævet
Nødvendig med montering fra fagvegverksted
Verkstadsmontage erfordras
Asennus tarpeen merkkikorjaamossa
Montáž ve specializované díně nutná
A szereléshez szakmúhely kell
Konieczny montaż przez warsztat specjalistyczny
Να τοποθετεί από συνεργείο



- (GB) Movement Arrow
- (D) Bewegungspfeil
- (E) Flecha de movimiento
- (F) Flèche indiquant sens du mouvement
- (I) Freccia di movimento
- (P) Flexa de movimento
- (NL) Richtingspijl
- (DK) Bevægelsespil
- (N) Bevegelsespil
- (S) Rörelsepil
- (SF) Liikesuuntanuoli
- (CZ) Šipka pohybu
- (H) Mozgásirányjelző nyíl
- (PL) Strzałka kierunku ruchu
- (GR) Βέλος κίνησης



- (GB) Use Drill
- (D) Bohrer verwenden
- (E) Utilizar broca
- (F) Utiliser une mèche
- (I) Utilizzare trapano
- (P) Utilizar a perforadora
- (NL) Boordiameter
- (DK) Bor anvendes
- (N) Bruk diameter
- (S) Använd borr
- (SF) Käytä poraa
- (CZ) Použit vrták
- (H) Használgon fúrót
- (PL) Stosować wiertarkę
- (GR) Χρησιμοποιείτε τρυπάνι



- (GB) Tape up
- (D) Mit Klebeband befestigen
- (E) Fijar con cinta adhesiva
- (F) Fixer avec ruban adhésif
- (I) Fissare con nastro adesivo
- (P) Sujeitar com fita adesiva
- (NL) Vastzetten met tape
- (DK) Fastgøres med tape
- (N) Fest fast med klebebånd
- (S) Fästed med tejp
- (SF) Kiinnytys teipillä
- (CZ) Upevnit lepicí páskou
- (H) Rögzítse ragasztószalaggal
- (PL) Umocować taśmą samoprzylepną
- (GR) Στερέωση με κολλητική ταινία



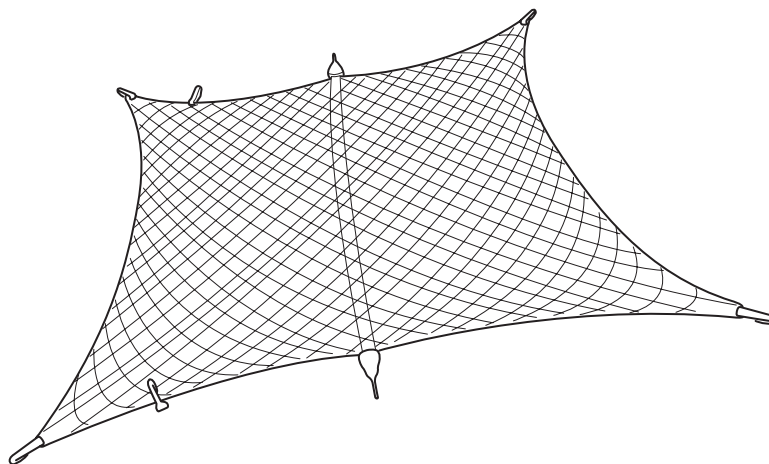
- (GB) Disconnect
- (D) Abklemmen
- (E) Desconectar
- (F) Déconnecter
- (I) Staccare
- (P) Desligar
- (NL) Demonteren
- (DK) Frakobles
- (N) Klem av
- (S) Koppla los
- (SF) Irrota
- (CZ) Odpojit
- (H) Szakítsa meg, kapcsolja szét
- (PL) Rozłączyć
- (GR) Αποσύνδεση



- (GB) Connect
- (D) Verbinden
- (E) Conectar
- (F) Raccorder
- (I) Collegare
- (P) Ligar
- (NL) In elkaar
- (DK) Kobles
- (N) Tilkopling
- (S) Anslut
- (SF) Yhdistä
- (CZ) Spojit
- (H) Kapcsolja össze
- (PL) Połączyć
- (GR) Σύνδεση

A

C830-V0-531



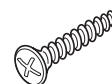
1X

B



2X

C



4X

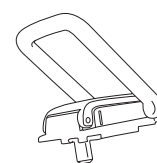
D



4X

E

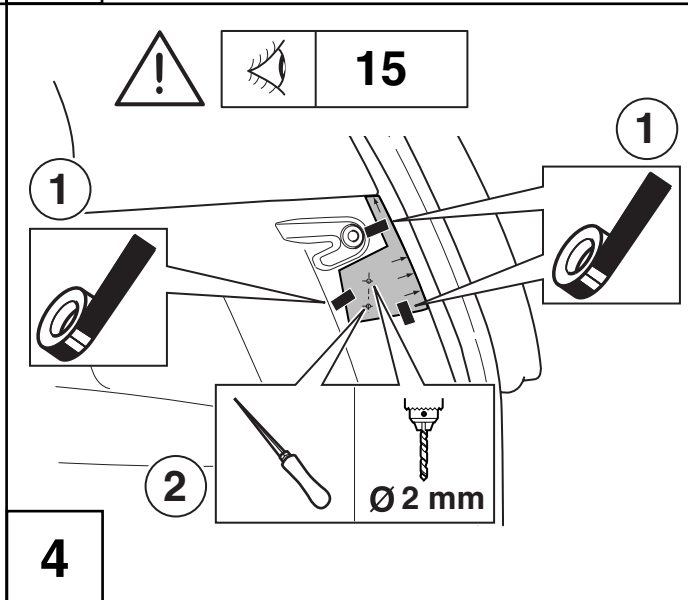
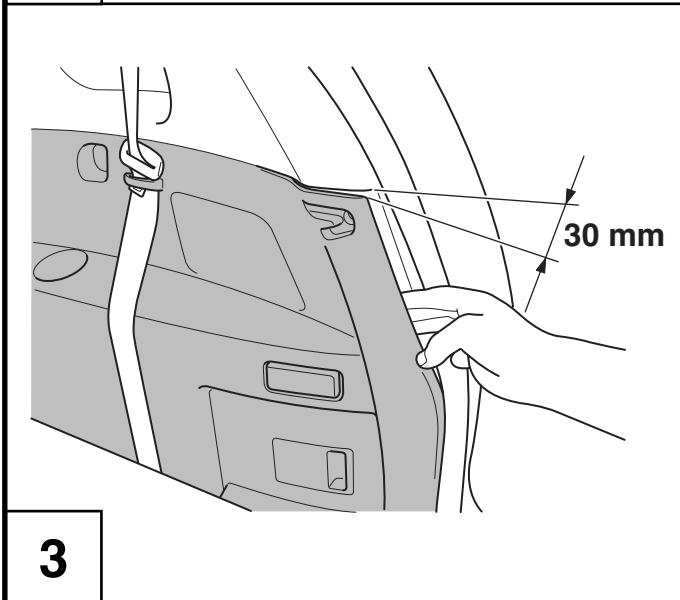
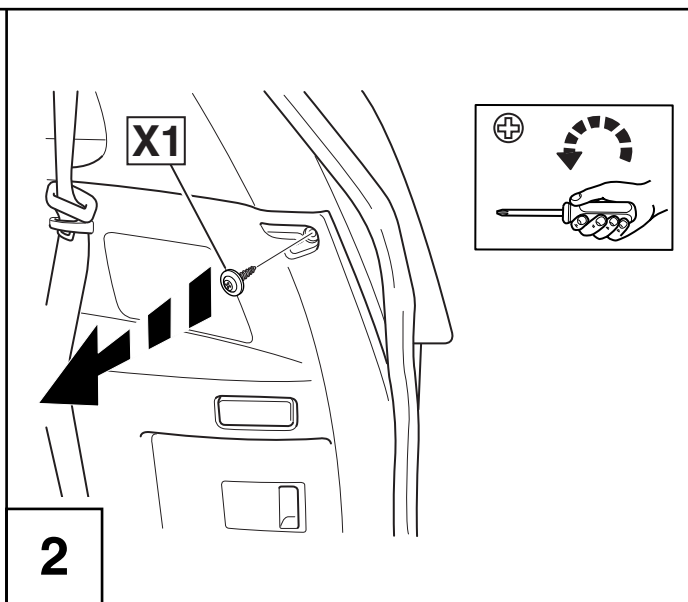
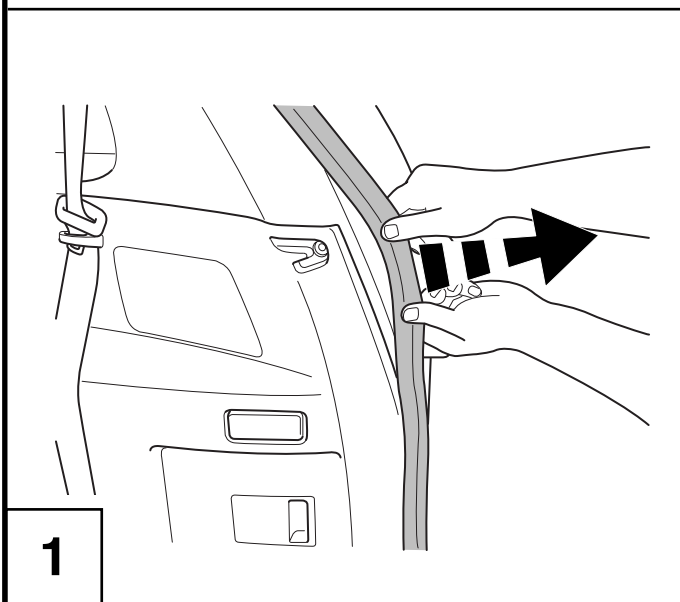
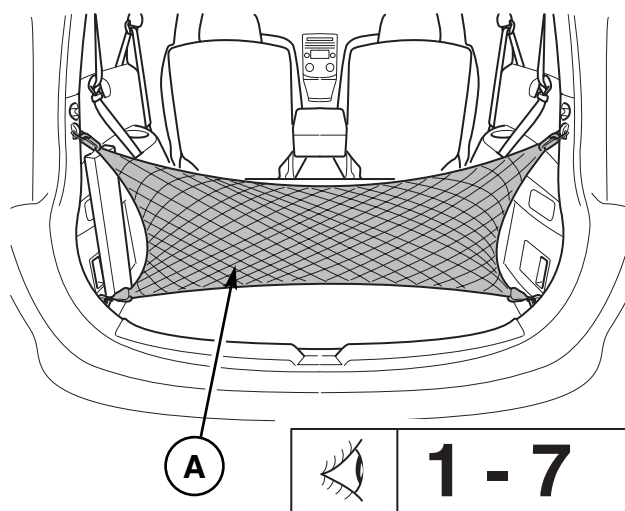
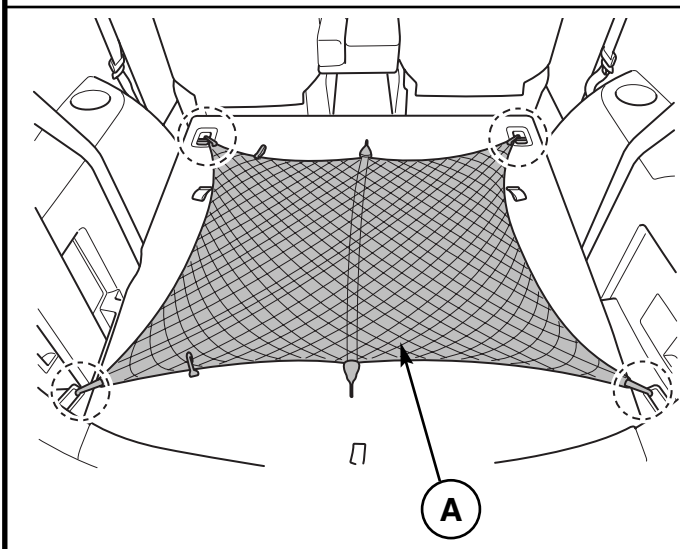
LD47-69-56X 02

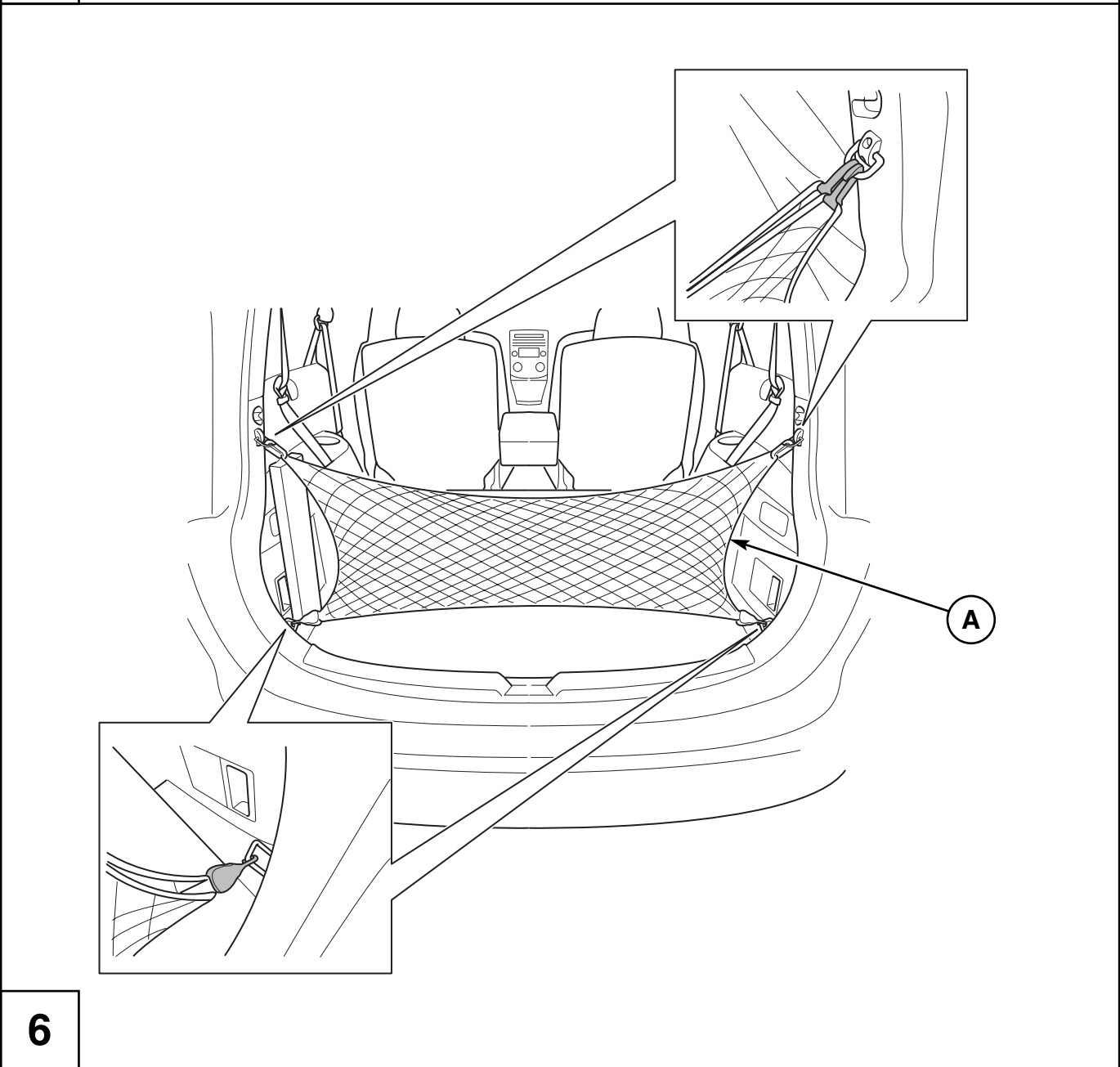
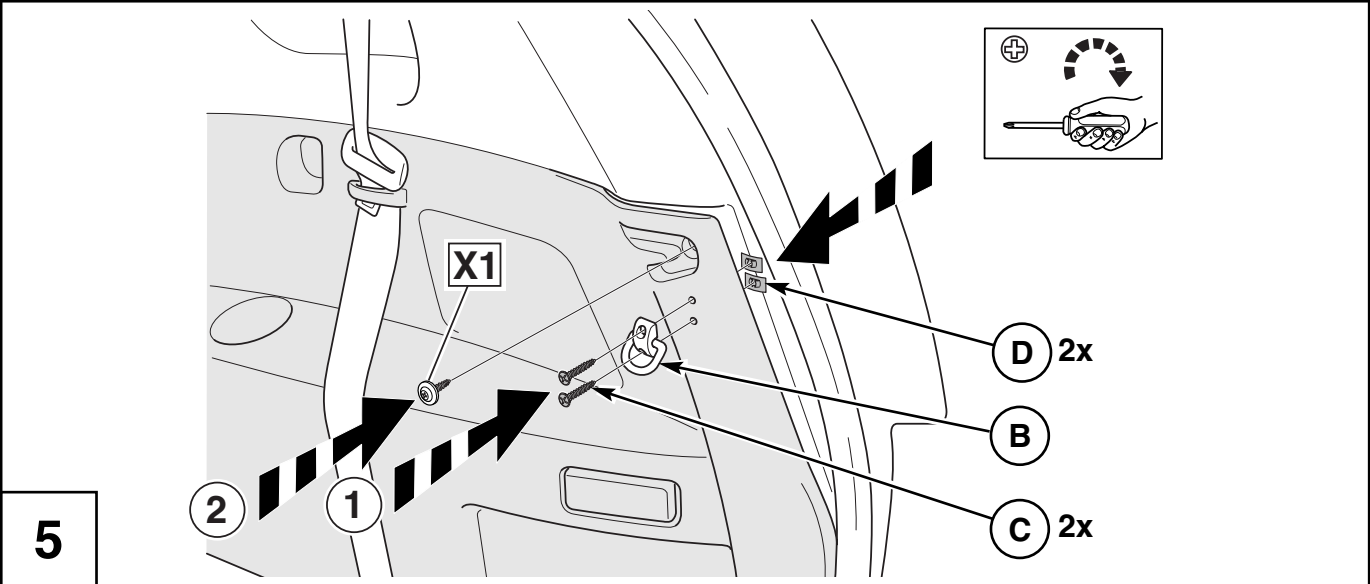


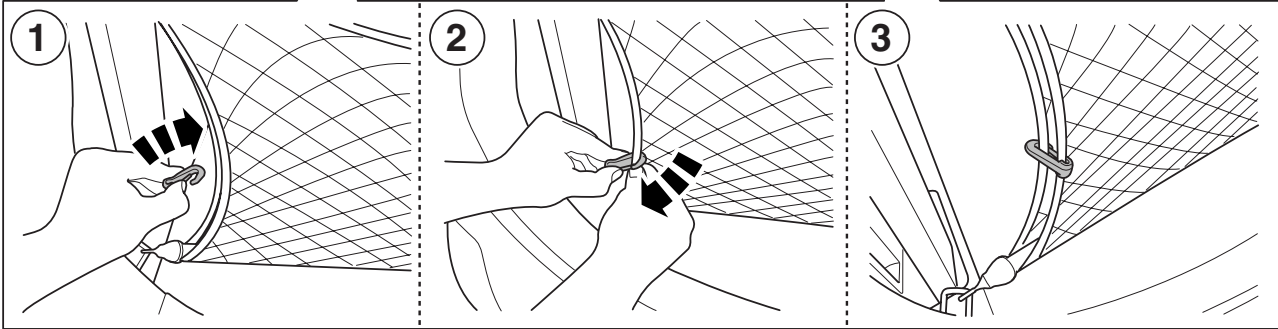
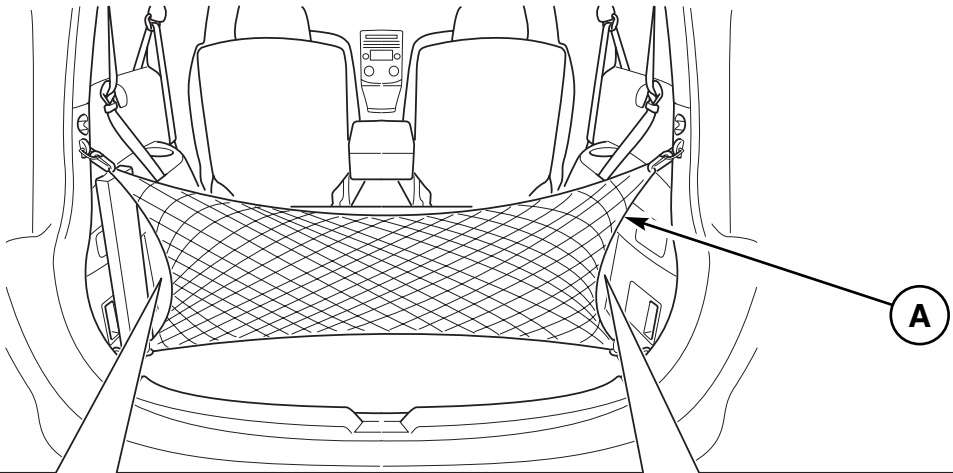
4X

Subject to alternation without notice
 Technische Änderungen vorbehalten
 Reservadas modificaciones técnicas
 Sous réserve de modifications techniques
 Con riserva di apportare modifiche tecniche
 Reservamo-nos o direito a alterações técnicas
 Technische wijzigingen voorbehouden
 Med forbehold for tekniske ændringer
 Tekniske forendringer forbeholdes
 Med reservation för tekniska ändringar
 Tekniset muutokset pidätetään
 Technické zmeny vyhrazeny
 A változtatások technika jogát fenntartjuk
 Zmiany techniczne zastrzeżone
 Επιφυλασσόμεθα για αλλαγές

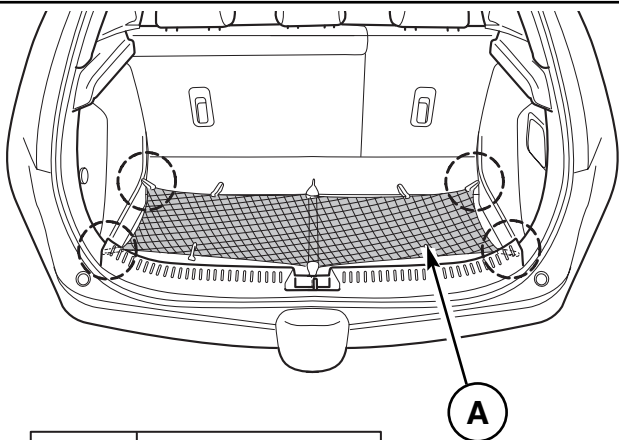
MAZDA 5 CR1



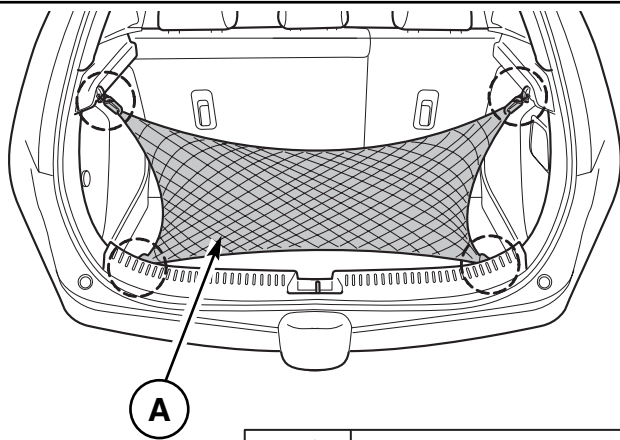




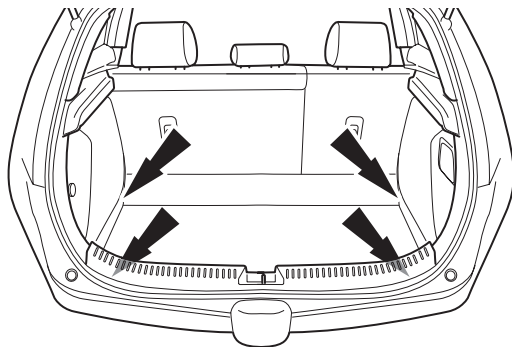
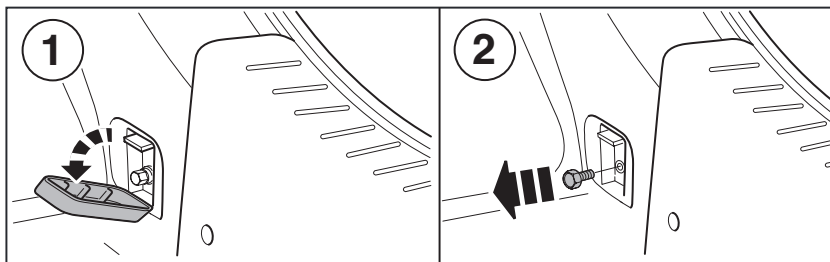
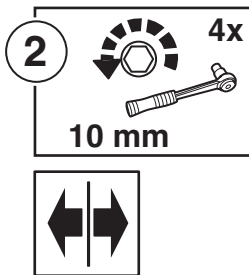
MAZDA 3 BK



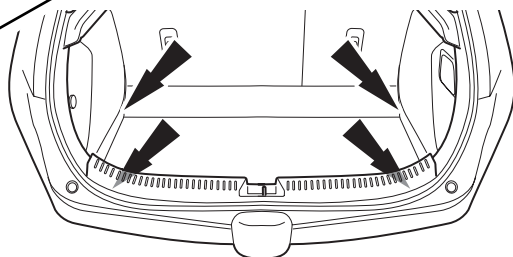
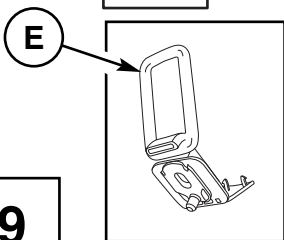
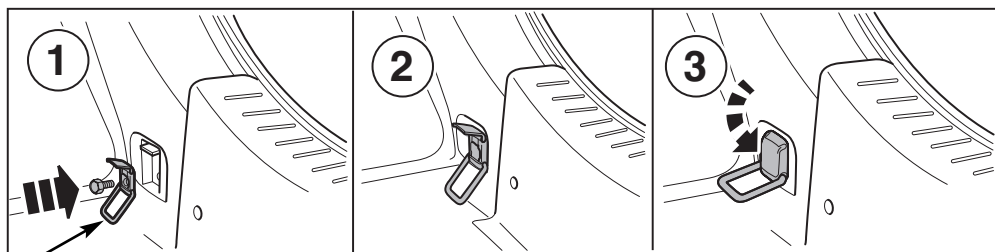
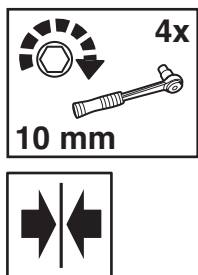
 **8 - 10**



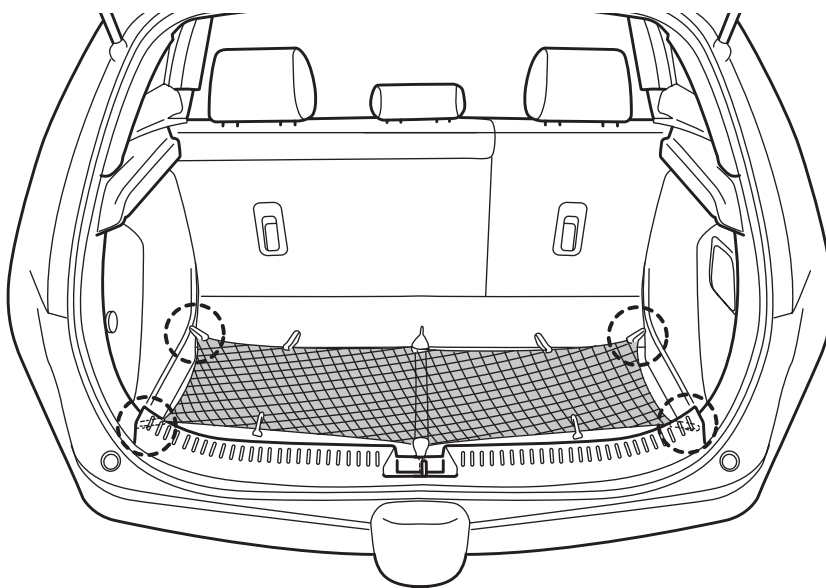
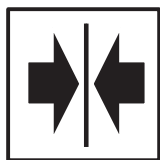
 **11 - 13**



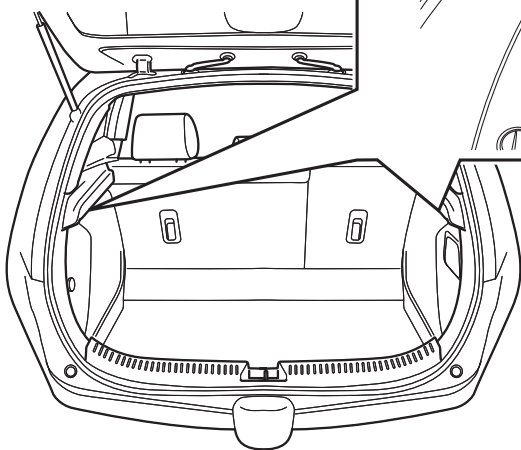
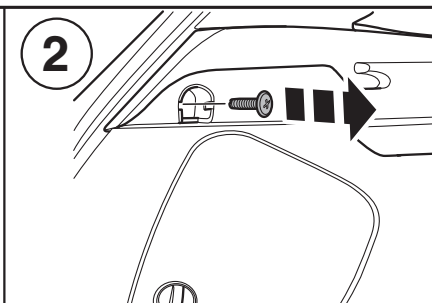
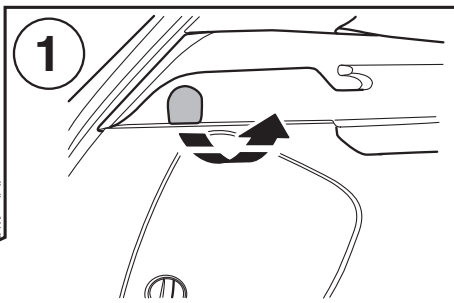
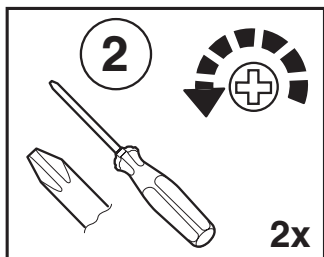
8



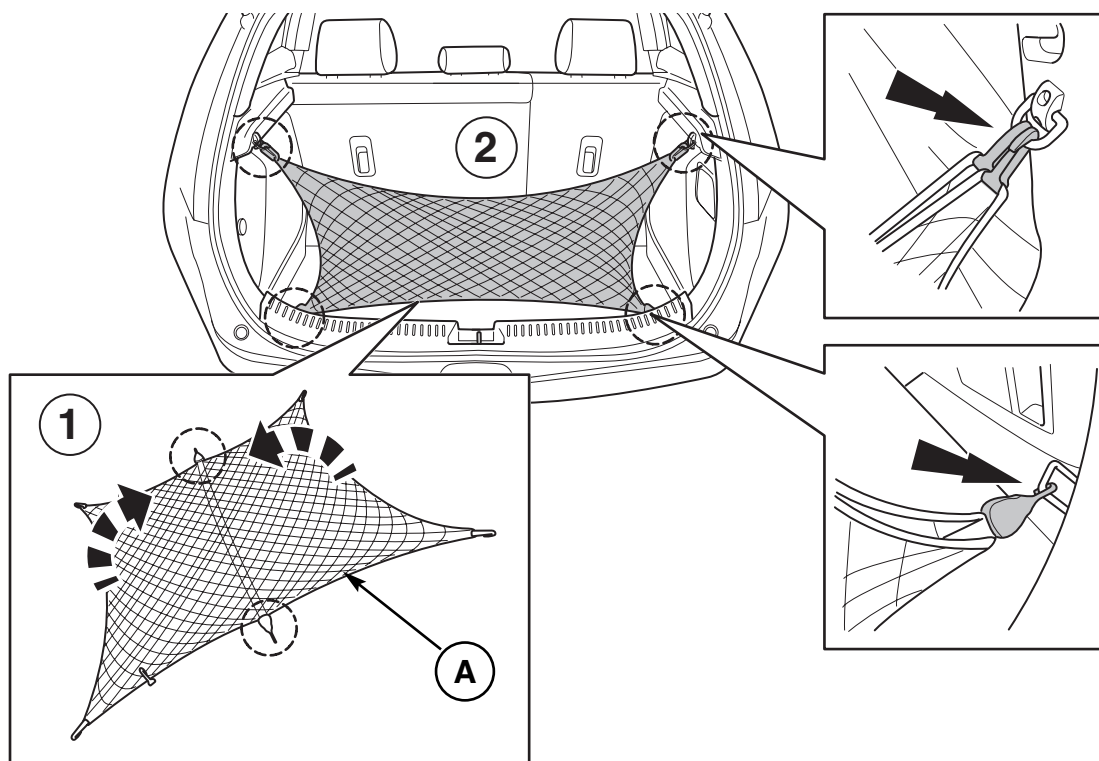
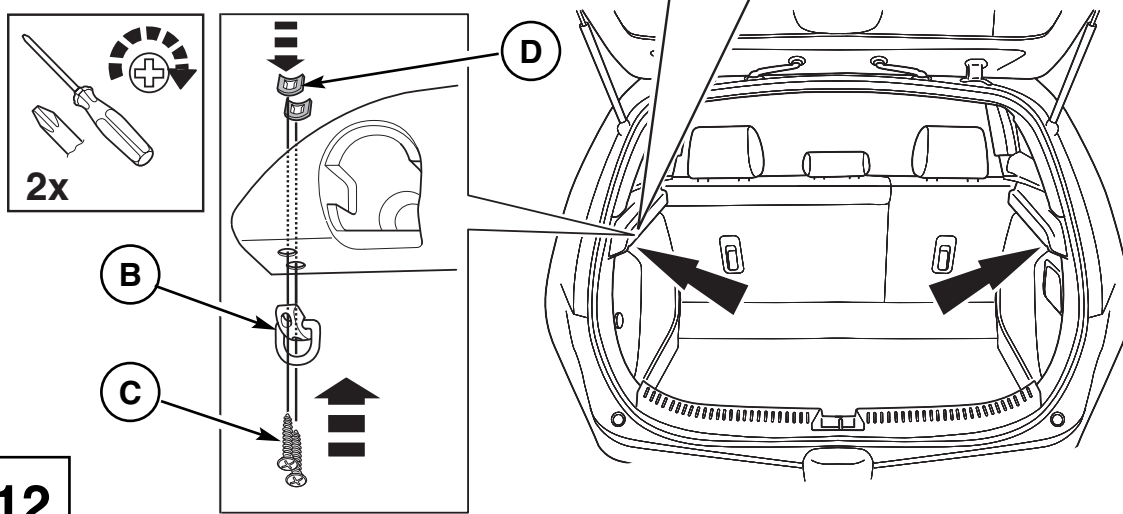
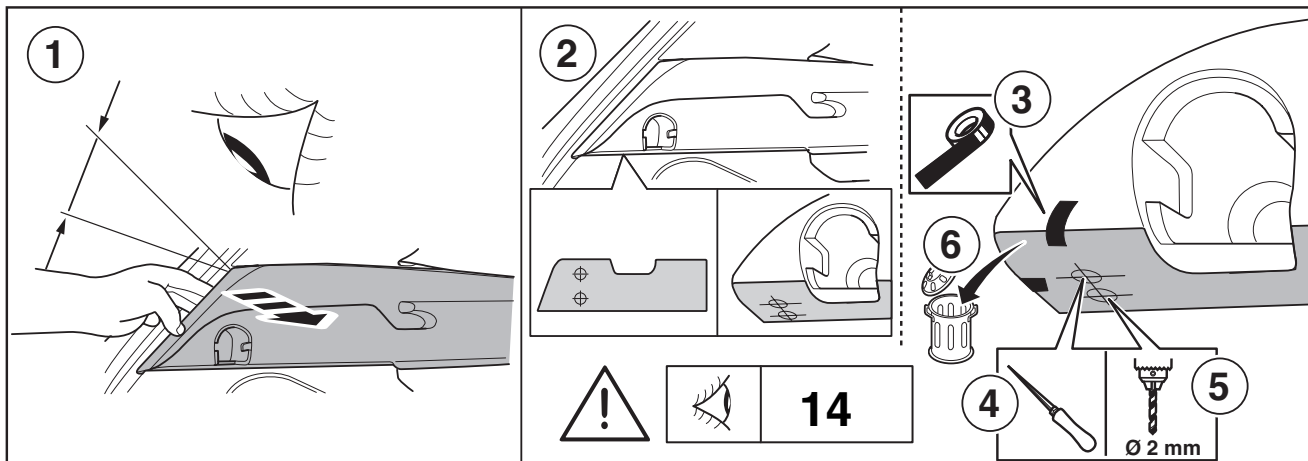
9

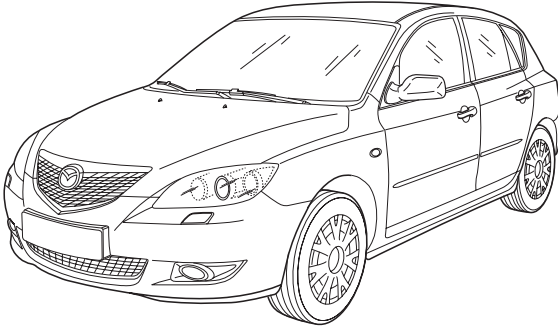


10



11

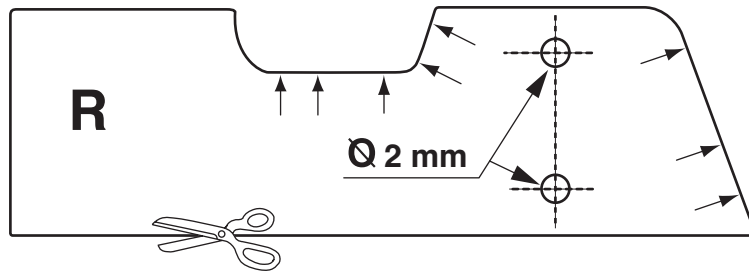
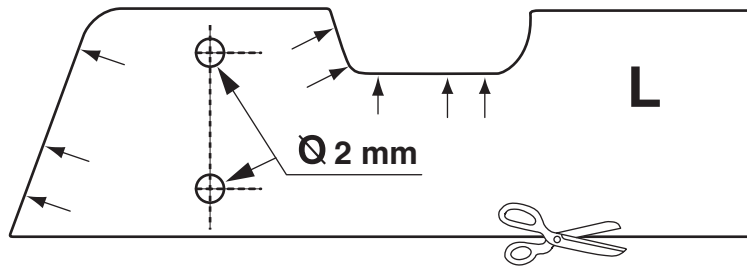


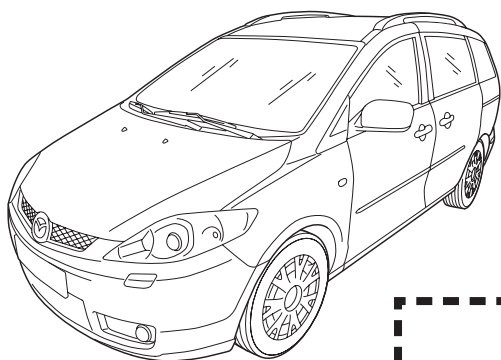


MAZDA 3 BK




CHECK SIZE
Check with Rulers before use
Print 100%





MAZDA 5 CR1



**Print 100%
Check with Rulers
before use.**

CHECK SIZE

