

# MAZDA

**GB** DOOR MIRROR GARNISH  
Installation Instructions

**D** SPIEGELABDECKUNG  
Einbauanleitung

**E** CUBIERTA DE ESPEJO  
Instrucciones de Montaje

**F** REVETEMENT DE MIROIR  
Instructions de Montage

**I** COPERTURA DELLO SPECCHIO  
Istruzioni di Montaggio

**P** TAMPA DO ESPELHO  
Instruções de Montagem

**NL** SPIEGELAFDEKKING  
Inbouw-Instructie

**DK** SPEJLOVERTRÆK  
Monteringsvejledning

**N** SPEILBEKLEIDNING  
Monteringsveiledning

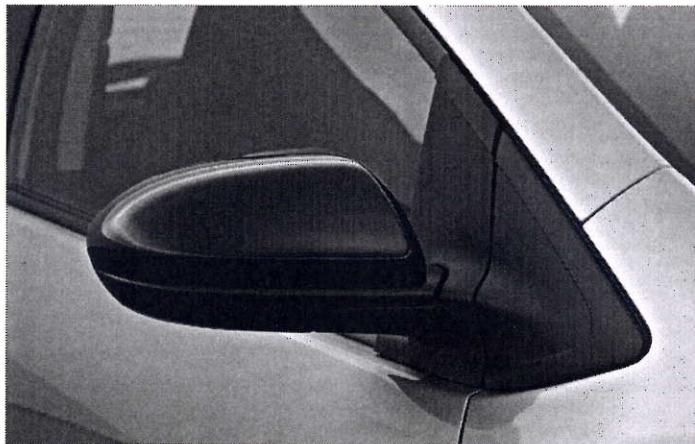
**S** SPEGELSKYDD  
Monteringsanvisning

**SF** PEILIKOTELO  
Asennusohje

**CZ** KRYT ZRCATKA  
Návod k Montáži

**H** TÜKÖRFEDEL  
Beszerelési Utasítása

**PL** POKRYCIE DLA LUSTERKO  
Instrukcja Instalowania



Part No: DP75-V3-650

Date: 08-11-2010

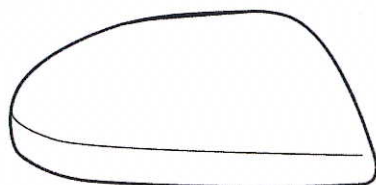
© Copyrights MAZDA

Sheet 1 of 4

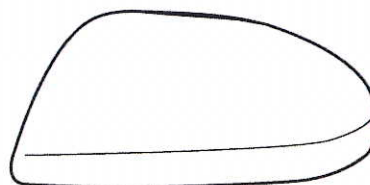
Expert Fitment Required  
Montage durch Fachwerkstatt erforderlich  
Montaje sólo por el concesionario  
Montage par spécialiste nécessaire  
E necessario in officina specializzata  
Especialista em montagem requerido  
Montage door vakman nodig  
Montage ved professionelt værksted påkrævet  
Nødvendig med montering fra fagvejværksted  
Verkstadsmontage erfordras  
Asennus tarpeen merkkikorjaamossa  
Montáž ve specializované dílně nutná  
A szereléshez szakműhely kell  
Konieczny montaż przez warsztat specjalistyczny  
Να τοποθεη από συνεργείο  
Необходима подгонка специалистом



**A**



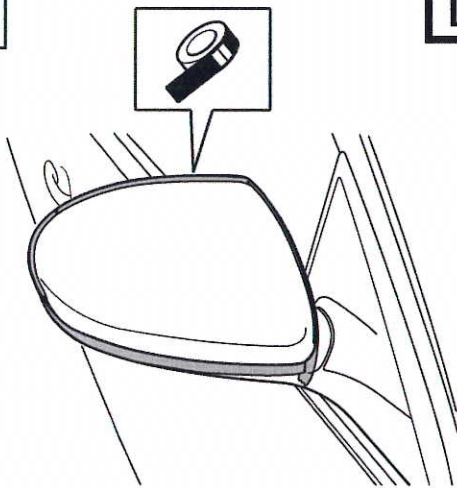
**R** X 1



**L** X 1

1

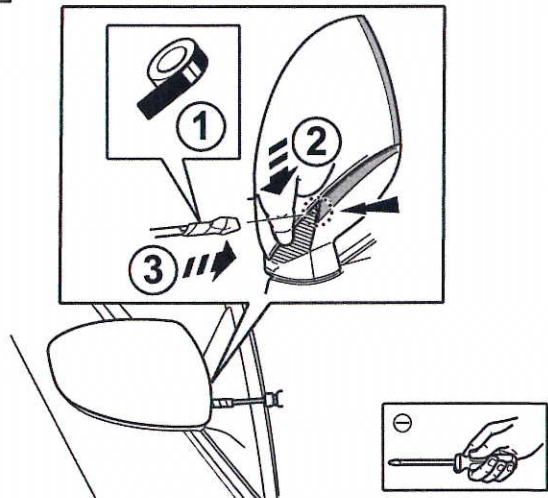
L+R



2



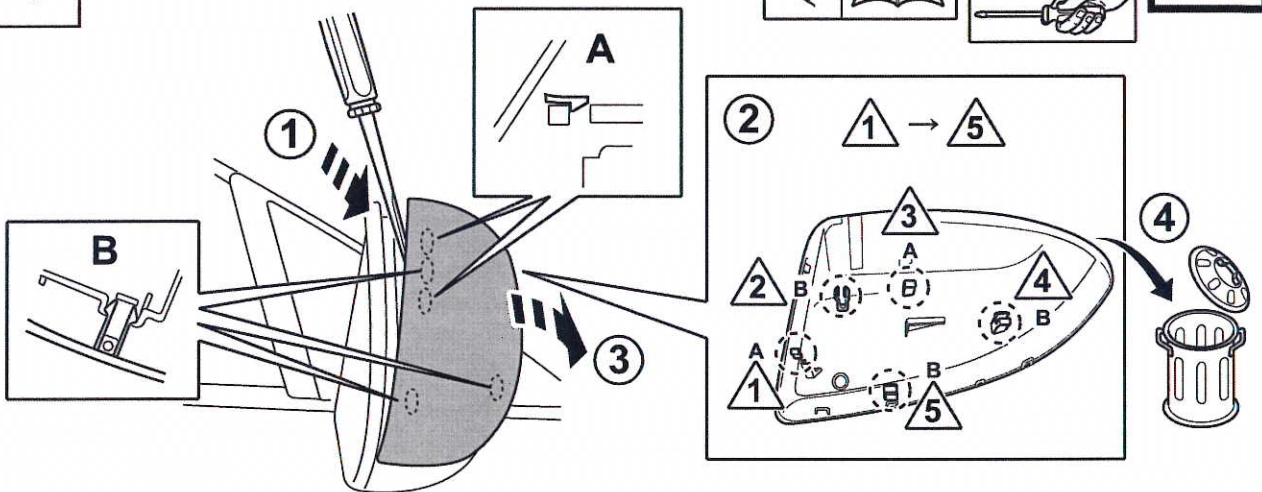
L+R



3

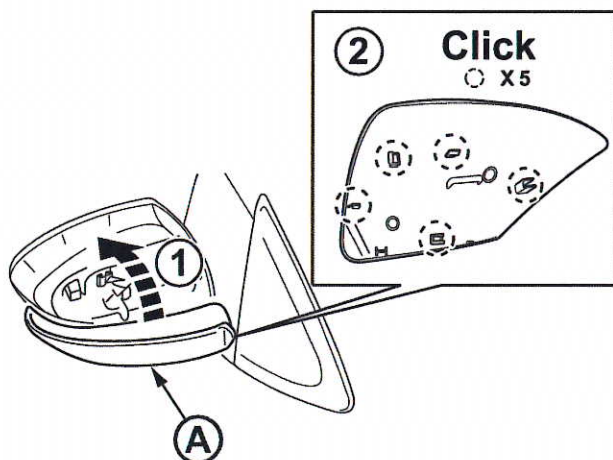


L+R



4

L+R



5

L+R

