



INSTRUCTION (INSTALLATION) MANUAL

Thank you for purchasing genuine Mazda accessories.
In order to maintain the optimum condition, read this manual carefully and familiarize yourself with this product prior to the operation.

Retain this instruction manual for future reference.

**CAUTION**

- The  **WARNING** and  **CAUTION** symbols in this manual indicate safety precautions at the time of installation. Read the instruction carefully to prevent injuries or possible damage to your vehicle.
- Do not install altered accessories in your vehicle.
- Do not install accessories other than the way specified in this manual.
- In order to prevent possible damage to your vehicle, ask your authorized Mazda dealer for installation.
- If you have any questions concerning the installation or operation of this product, contact your Mazda dealer for assistance.
- Mazda Motor Corporation shall not be liable for failures or damages caused by neglect of these instructions.

1

PART NUMBER: G22B V3 770F

PART NAME: SIDE MARKER RING

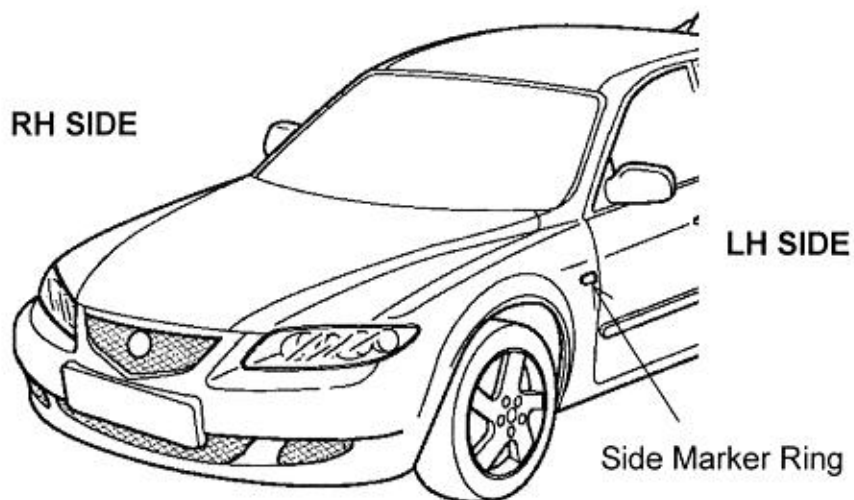
APPLIED VEHICLE: GENERIC TYPE

※ Consult your Mazda dealer if you have any questions or need further clarification of this product, such as applicable vehicles for this accessory etc.

Authorized Dealers:

- Be sure to return this manual to the customer after installation.

2 FINISHED IMAGES



3 COMPONENT PARTS

⚠ CAUTION

Check the chart shown below and make sure that no parts are missing. Make sure that all the component parts are free from dirt, scratches, or damages.

No.	Part Name	Qty.	No.	Part Name	Qty.
①	Side Marker Ring, RH	1	③	Tape	2
②	Side Marker Ring, LH	1	④	Instruction(Installation) Manual	1

※ Side Marker Ring ①② has a mark on each of the back as R for RH, L for LH.

※ Tape ③ in the kit is not used for Mazda2.

①



②



③



④



4 BEFORE INSTALLATION

• REQUIRED TOOLS

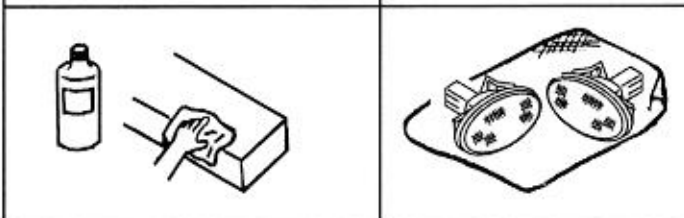
Prepare the following tools prior to installation.

- IPA (isopropyl alcohol) or white gasoline
- Masking tape

⚠ CAUTION

When installing parts with double-sided adhesive tape, carefully clean the adhesive surface and keep from dust or dirt.

Put the removed parts and new parts in the kit on a protective sheet to prevent scratches.



REFERENCE

- Refer to maintenance handbook for removal/assembly of parts on vehicle.

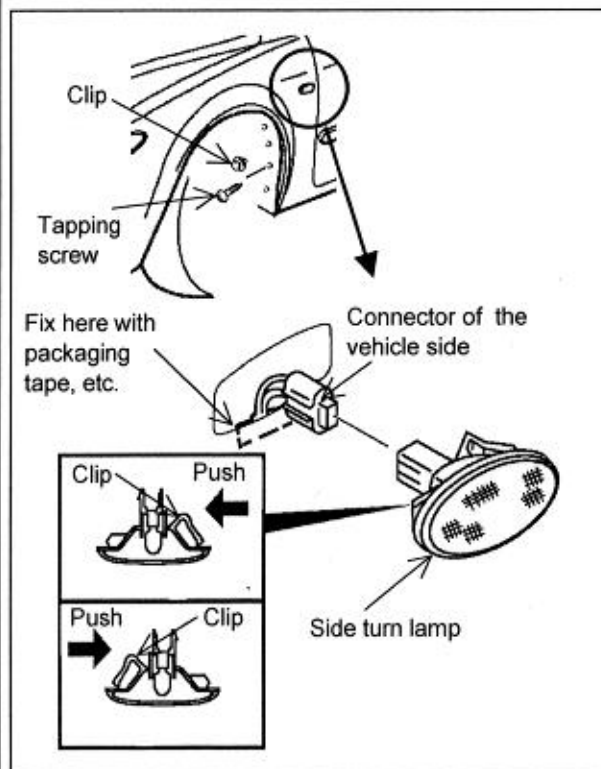
5 REMOVING PARTS ON VEHICLE

REFERENCE

- For removing parts on vehicle, this figure shows LH side of the vehicle, but the same as RH side.

⚠ CAUTION

- Keep the removed parts carefully, so as to prevent scratches and loss.



REMOVING SIDE TURN LAMP

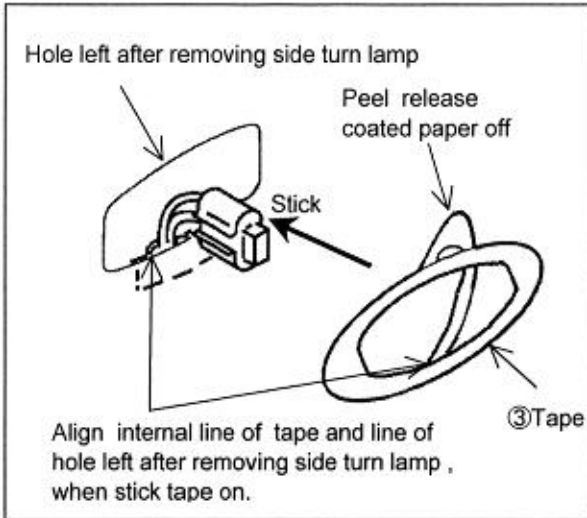
※This procedure is not needed for Mazda2.

1. Disconnect (-) cable from battery.
2. Remove mud guard clip and tapping screw.
3. Take the mud guard off. From the back side of the fender, pinch clip on frontal or rear side of the back of side turn lamp and take lamp off.
4. Disconnect side turn lamp from connector of the vehicle side.

⚠ CAUTION

- Fix disconnected connector of the vehicle side with packaging tape, etc. to prevent from falling inside of vehicle.

6 INSTALLATION PROCEDURE



REFERENCE

- For installing the side marker ring, this figure shows LH side of the vehicle, but the same as RH side.

STICKING TAPE

※This procedure is not needed for Mazda2.

⚠ CAUTION

- Wipe oil, dust or dirt off the adhesive surface by IPA (isopropyl alcohol).

1. Peel release coated paper off tape, then align internal line of tape and line of hole left after removing side turn lamp. Stick tape on it.

⚠ CAUTION

- When sticking tape on, take care not to make air bubble under tape. In case that it is difficult to remove air bubble, make hole by needle and let air out.

RESTORING VEHICLE PARTS

※This procedure is not needed for Mazda2.

1. Install the side turn lamp in reverse order from removing.
2. Install the mud guard in reverse order from removing.

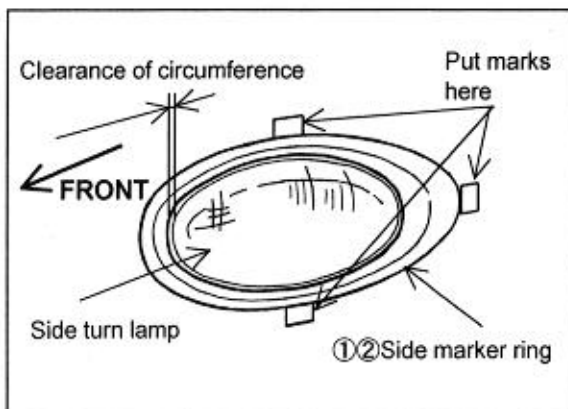
⚠ CAUTION

- Be sure to connect the connector.
- When installing, be sure not to tighten the tapping screw with too much force, so as not to damage the installed area.

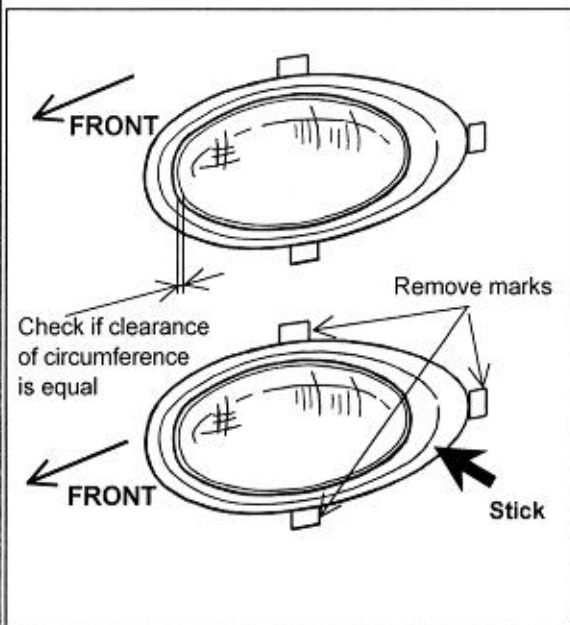
INSTALLING SIDE MARKER RING

⚠ CAUTION

- Wipe oil, dust or dirt off the adhesive surface of side marker ring, by IPA (isopropyl alcohol).
- If the ambient temperature is under 15°C, warm the installation surface and the double-sided adhesive tape using a dryer, etc. High heat could warp the side marker ring. Be careful when heating.



1. Put R mark side marker ring on RH side and L mark side marker ring on LH side, so as to fit side marker rings around side turn lamps with equal clearance of circumference. Put 3 marks on outer circumference with masking tapes, etc.



2. Peel release coated paper off the back side of marker ring, then align the marker ring with 3 marks of masking tape. Check if the clearance of circumference is equal, and then stick it on.

CAUTION

- Check R, L mark on the back of marker ring for sticking it on the right side.

3. **Fully stick the area of side marker ring's tape** and then remove 3 marks.

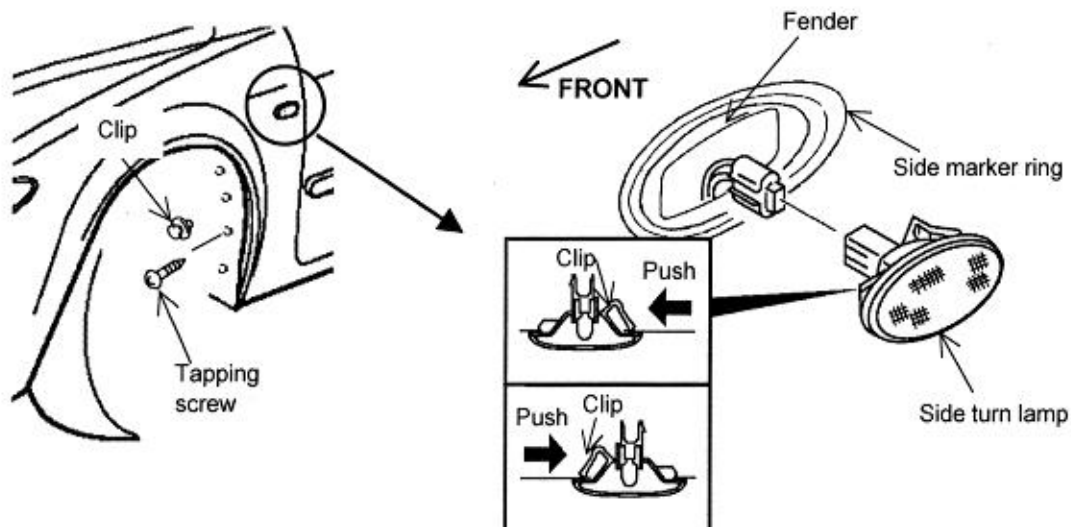
CAUTION

- Once this kit sticks to the car body, do not remove it. The double-sided adhesive tape will be weakened.
- Do not wash the car within 24 hours after sticking this kit.

【FOR CUSTOMER】

CAUTION

- When exchanging the side turn lamp, take the mud guard off. From the back side of the fender, pinch clip and take it off.
- ※ Clip is on frontal or rear side of the back of side turn lamp. Check it and take lamp off.



INSTALLATION INSPECTION SHEET

【For Authorized Dealer】

GENERIC TYPE	Side Marker Ring
	G22B V3 770F

A. Restoration of vehicle parts

Restore all the parts in reverse order from the steps shown in "Removing Parts on Vehicle".

B. Inspection Items After Installation

• Inspect the installed and reassembled parts according to the following chart.

Inspection Item	Items to be Inspected (○)					
	Clearance/ Fit	Scratches, Dirt, Tape Residue	Tightening/ Engage- ment	Operation	Aiming	Rust- Proofing
Side Marker Ring(Kit Part)	○	○				
Side Turn Lamp	○	○	○	○		

※Inspection of side turn lamp is not needed for Mazda2.

Installation Inspection Sheet for Side Marker Ring

Date				
VIN No.				
Approved		Checked		Person in charge

Retain this sheet for 3 months from the date of inspection

SIDE MARKER RING INSTRUCTION (INSTALLATION) MANUAL-SUPPLEMENT VERSION

Page	P. 2
Item	COMPONENT PARTS

No.	Part Name	Qty.
⑤	SIDE MARKER RING INSTRUCTION (INSTALLATION) MANUAL-SUPPLEMENT VERSION	1

⑤



• TAPE ③ in the kit is not used for Mazda2.

Page	P. 3
Item	REMOVING SIDE TURN LAMP

• This procedure is not needed for Mazda2.

Page	P. 4
Item	STICKING TAPE RESTORING VEHICLE PARTS

• This procedure is not needed for Mazda2.

Page	P. 4
Item	INSTALLING SIDE MARKER RING

• Add CAUTION for affixing the double-sided adhesive tape.

⚠ CAUTION

• If the ambient temperature is under 15°C, warm the installation surface and the double-sided adhesive tape using a dryer, etc. High heat could warp the side marker ring. Be careful when heating.

• Add CAUTION after affixing the double-sided adhesive tape.

⚠ CAUTION

• Once this kit sticks to the car body, do not remove it. The double-sided adhesive tape will be weakened.
• Do not wash the car within 24 hours after sticking this kit.